

CANTUS
LAMENTATIONUM

CHANTS
OF
LAMENTATION

for

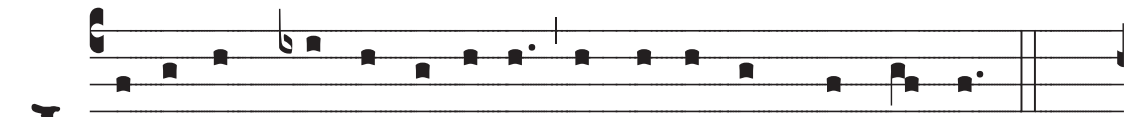
HOLY THURSDAY
GOOD FRIDAY &
HOLY SATURDAY

incorporating chants from
the Liber Usualis and Spanish codices

Compiled by Hugh Henry
April 2011
hughdhenry@gmail.com

FERIA V. IN COENA DOMINI

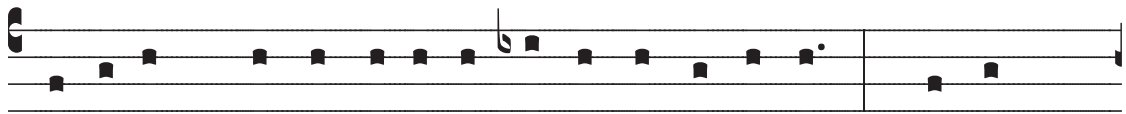
Lectio I.



I Ncí-pit Lamentá-ti-o Je-remí-ae Prophé-tae.



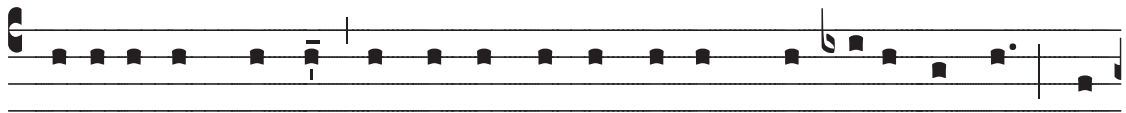
ALEPH. Quomódo sédet só-la cí-vi-tas pléna pópu-lo :



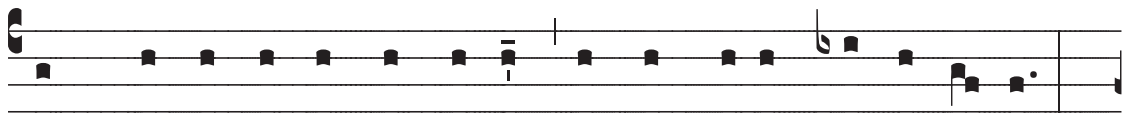
fácta est quá-si vídu-a dómi-na génti-um : prínceps



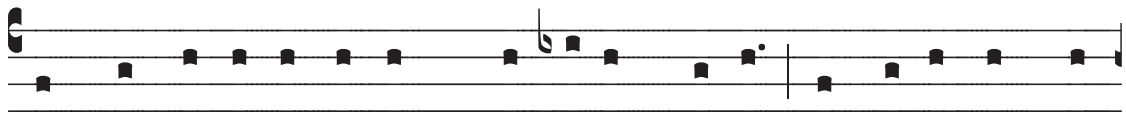
provínci-árum fácta est sub tribú-to. BETH. Plórans



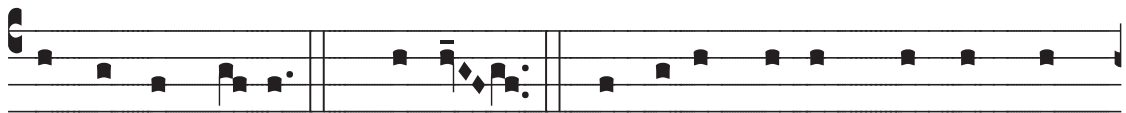
plorávit in nócte, et lácrimae é-jus in ma-xillis é-jus : non



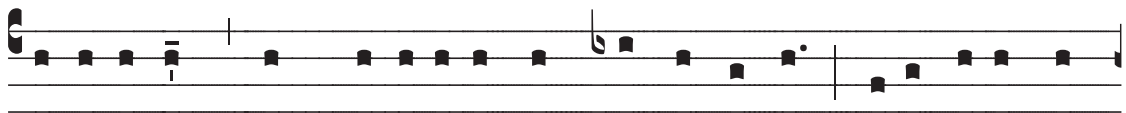
est qui conso-lé-tur é-am ex ómnibus cá-ris é-jus :



ómnes amí-ci é-jus spre-vérunt é-am, et fácti sunt é-



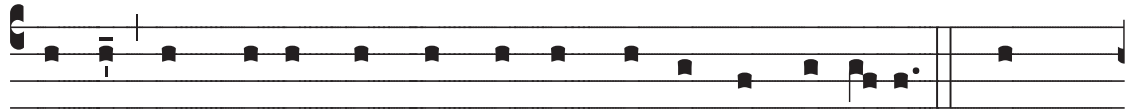
i in-i-mí-ci. GHIMEL. Migrávit Júdas própter af-



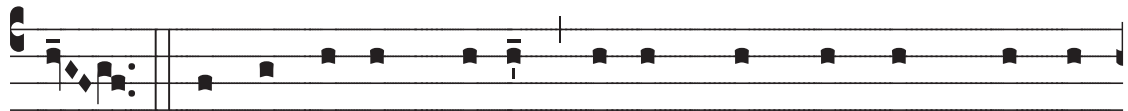
flicti-ónem et multítudi-nem servi-tú-tis : habi-távit in-



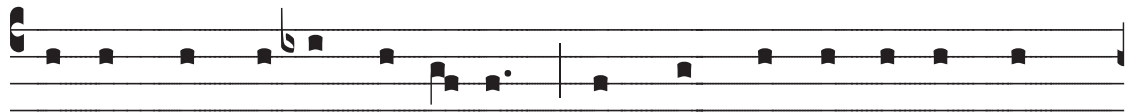
ter géntes, nec invénit réqui- em : ómnes persecutó-res



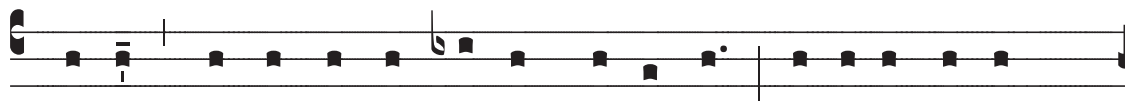
e-jus apprehendé-runt é-am inter angústi-as. DA-



LETH. VÍ- ae Sí-on lúgent e-o quod non sint qui vé-



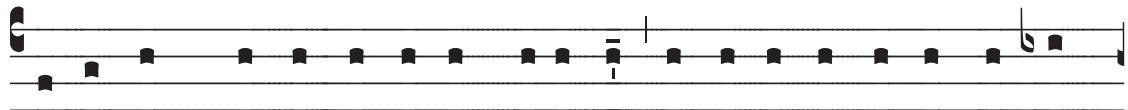
ni- ant ad so-lemni-tá-tem : ómnes pórtae é-jus de-



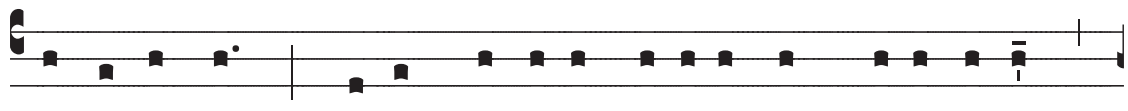
strúctae : sa-cerdó-tes é-jus geméntes : vírgines e-jus



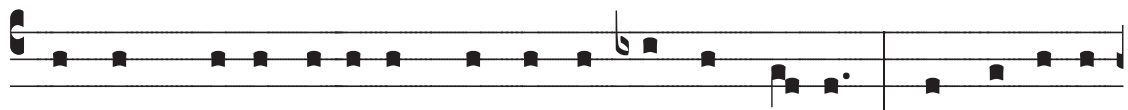
squa-lídae, et ipsa opprésa ama-ri-túdi-ne. HE.



Fácti sunt hóstes é-jus in cápi-te, in-imí-ci é-jus lo-cu-



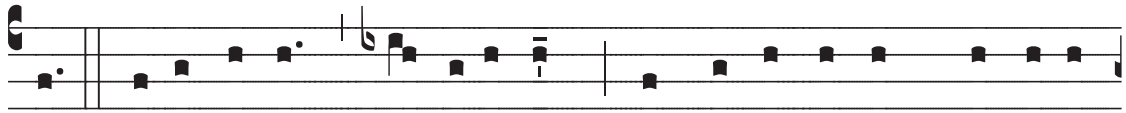
ple-tá-ti sunt : qui-a Dóminus locútus est súper é-am



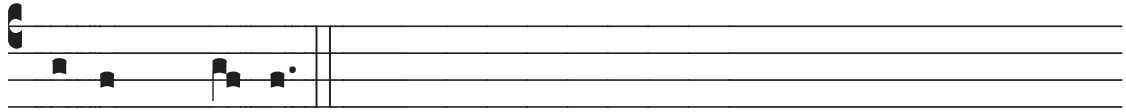
própter multi-túdinem in-iqui- tá-tum é-jus : párvu-li é-



jus dúcti sunt in capti-vi-tá-tem, ánte fá-ci-em tribulán-



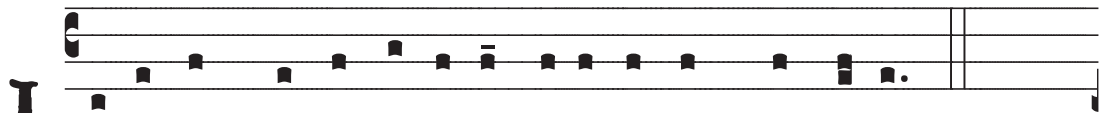
tis. Jerú-sa-lem, Je-rúsa-lem, convérte-re ad Dóminum



Dé-um tú-um.

Lectio I.
(*Tonus alius*)

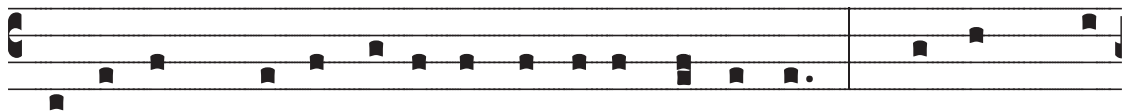
Ex Cod. Silensi



I Ncí-pit Lamentá-ti-o Jeremí-ae Prophétae.



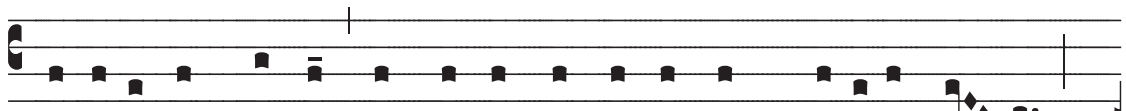
ALEPH. Quomódo sédet só-la cívi-tas pléna pópu-lo :



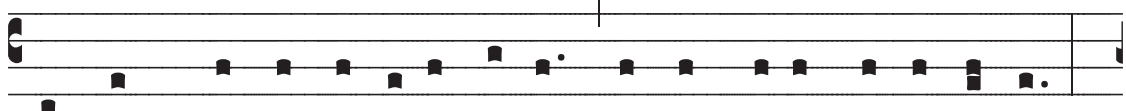
fácta est quá-si vídu-a dómina génti-um : prínceps pro-



vínci-á-rum fácta est sub tribú-to. BETH. Plórans



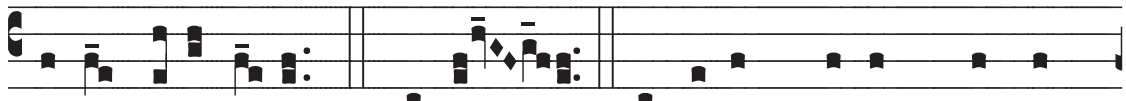
plorávit in nócte, et lácrimae é-jus in maxíllis é- jus :



non est qui conso-létur é-am ex ómnibus cá-ris é-jus :



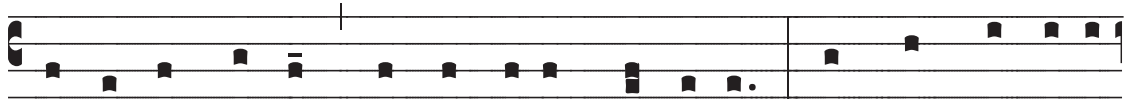
ómnes amí-ci é-jus spreverunt é-am, et fácti sunt



é-i inimí-ci. GHIMEL. Migrávit Júdas própter



afflicti-ónem, et multi-túdinem servitú-tis : habi-tá-



vit inter géntes, nec invénit réqui-em : ómnes persecu-



tó-res e-jus apprehendérunt é-am inter angústias.



DALETH. Ví-ae Sí-on lúgent, e-o quod non sint qui



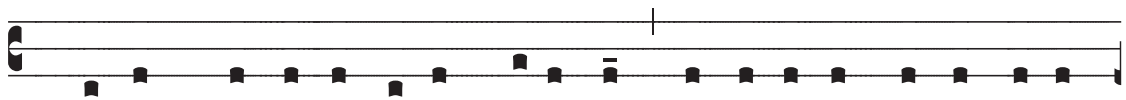
véni-ant ad so-lemni-tá-tem : ómnes pórtae é-jus de-



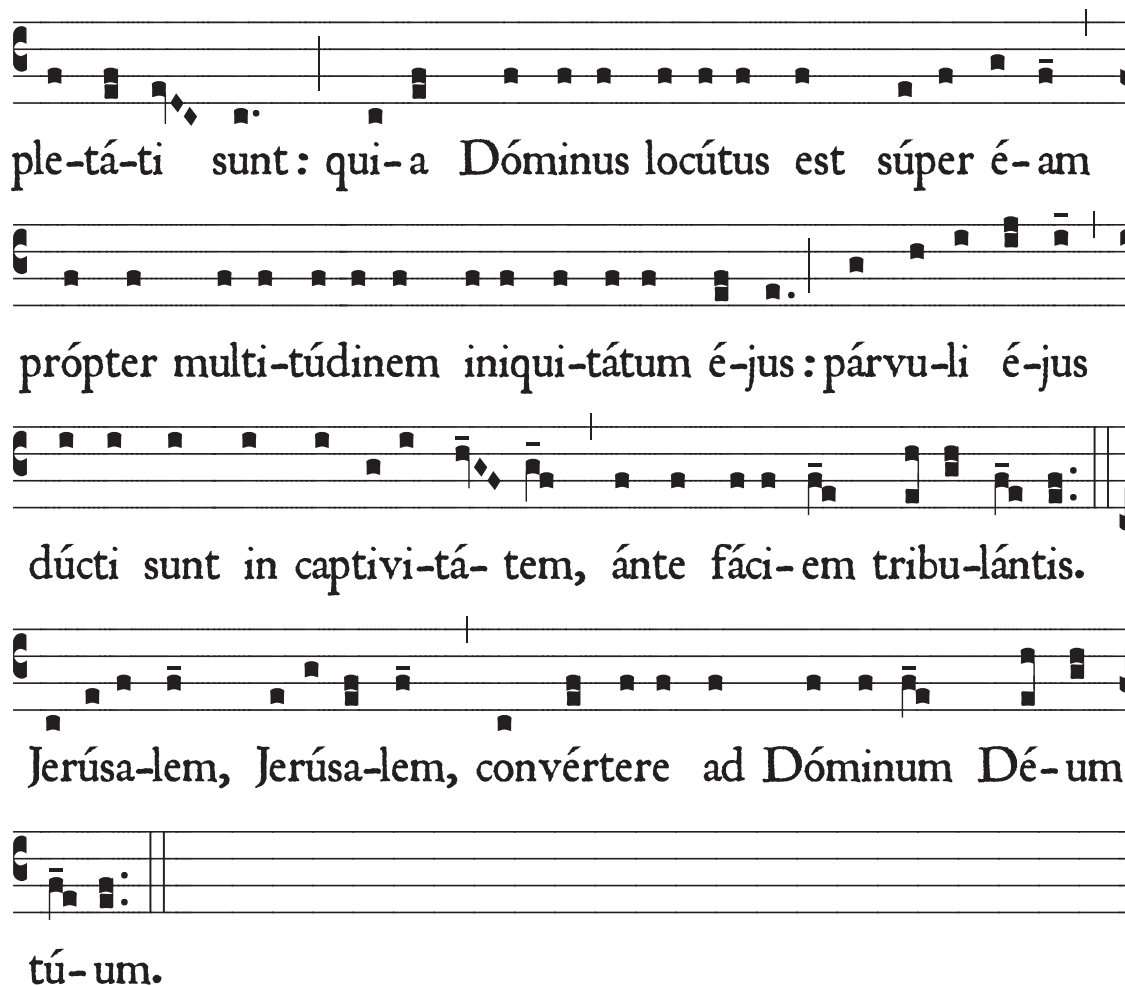
strúctae : sacerdótes é-jus geméntes : vírgines e-jus squa-



lídae, et ipsa opprés-sa ama-ri-tú-dine. HE.



Fácti sunt hóstes é-jus in cápi-te, i-nimí-ci é-jus locu-



ple-tá-ti sunt: qui-a Dóminus locútus est súpér é-am
 própter multi-túdinem iniqui-tátum é-jus: párvu-li é-jus
 dúcti sunt in captivi-tá-tem, ánte fáci-em tribu-lántis.
 Jerúsa-lem, Jerúsa-lem, convértere ad Dóminum Dé-um
 tú-um.

Lectio I.
 (*Tonus alius*)

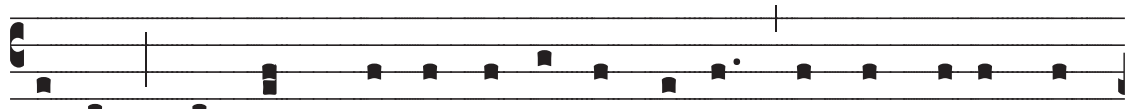
Ex Cod. Toletano



I Ncí-pit lamentá-ti-o Je-remí-ae Prophé-tae.
 ALEPH. Quomódo sédet só-la cí-vi-tas pléna pópu-lo:
 fácta est quá-si vídu-a dómi-na génti-um: prínceps
 pro-vínci-árum fácta est sub tribú-to. BETH.



Pló-rans plorávit in nócte, et lácrimae é-jus in maxíl-lis



é-jus : non est qui conso-lé-tur é-am ex ómnibus cá-




ris é-jus : ómnes amí-ci é-jus spreverunt é-am, et




fácti sunt é-i in-imí-ci. **GHI-MEL.** Migrávit



Júdas própter afflicti-ónem et multi-túdinem servi-tú-



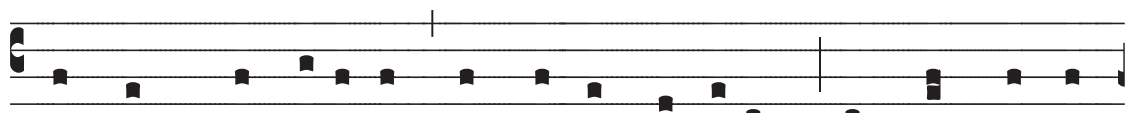
tis : habi-távit inter géntes, nec invénit réqui-em : ómnes



persecu-tó-res e-jus apprehendérunt é-am inter angú-



sti-as. **DALETH.** Ví-ae Sí-on lúgent, e-o quod

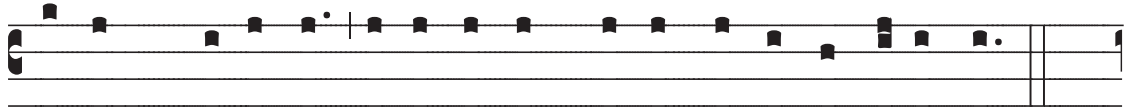


non sint qui véni-ant ad so-lemni-tátem : ómnes pórtae

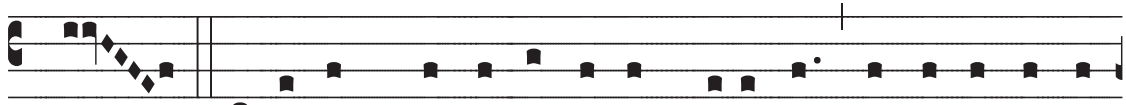


é-jus destrúctae : sa-cerdó-tes é-jus geméntes : vírgines

FERIA V. IN COENA DOMINI



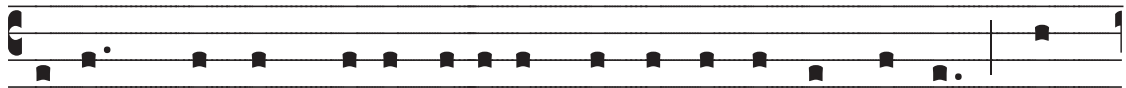
e-jus squa-lídae, et ipsa opprésa ama-ri-túdi-ne.



HE. Fácti sunt hóstes é-jus in cápi-te, in-imí-ci é-



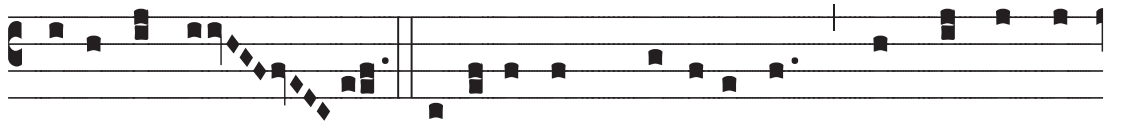
jus locuple-tá-ti sunt : qui-a Dóminus locútus est súper



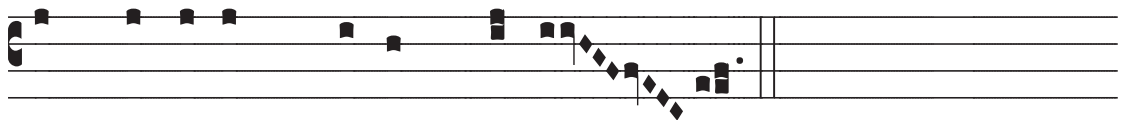
é-am própter multi-túdinem in-iqui-tá-tum é-jus : pár-



vu-li é-jus dúcti sunt in capti-vi-tá-tem, ánte fá-ci-em



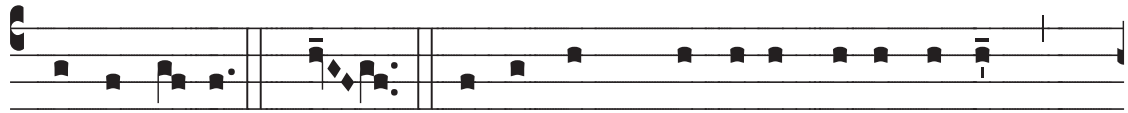
tribu-lántis. Jerúsa-lem, Jerúsa-lem, convérte-re



ad Dóminum Dé-um tú-um.

Lectio II.

V AU. Et egréssus est a fí-li-a Sí-on ómnis
 décor é-jus : fácti sunt príncipes é-jus vél-ut a-rí-e-tes
 non inveni- éntes páscu-a: et abi-é-runt ábsque forti-
 túdine ánte fá-ci-em subsequéntis. ZA-IN. Recordá-
 ta est Jerú-sa-lem di-é-rum afflicti-ónis sú-æ et præ-
 va-ri-ca-ti-ónis, ómni-um de-siderabí-li-um su-ó-
 rum, quae habú-erat a di-ébus antíquis, cum cáderet
 pópu-lus e-jus in mánu hostí-li, et non ésset aux-i-
 li-á-tor: vidé-runt e-am hóstes et de-ri-sé-runt sáb-



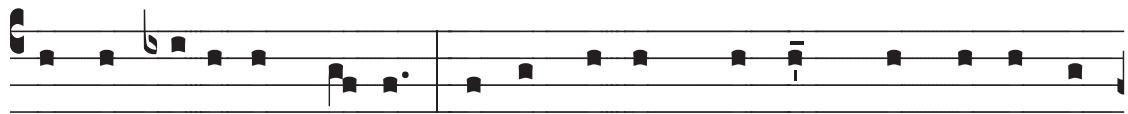
ba-ta é-jus. HETH. Peccá-tum peccávit Jerú-sa-lem,



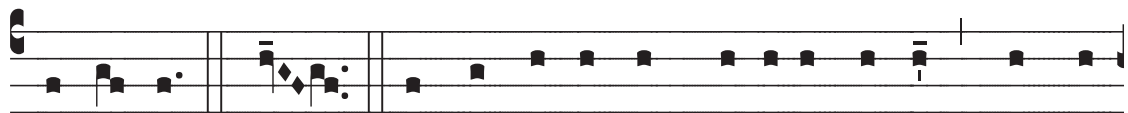
proptér-e- a instabí-lis fácta est: ómnes, qui glo-ri-fi-



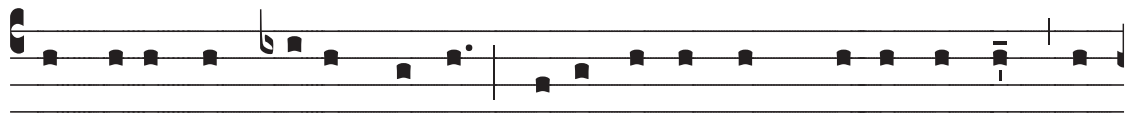
cábant é-am, spre-vé-runt il-lam, qui-a vi-dé-runt



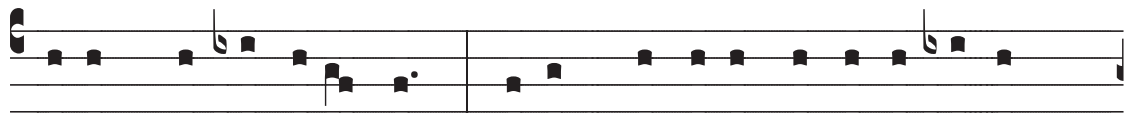
igno-míni-am e-jus: ípsa autem gémens conversa est



retrórsum. TETH. Sórdes é-jus in pédibus é-jus, nec re-



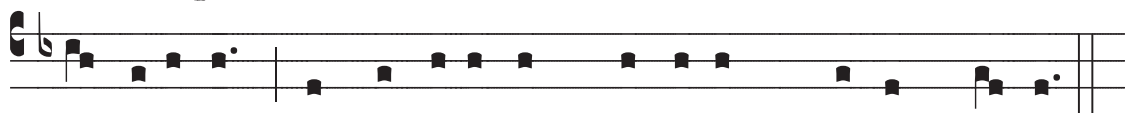
cordáta est fínis sú- i : depó-si-ta est veheménter, non



hábens conso-lató-rem: víde, Dómine, afflicti- ónem



mé-am, quóni-am eréctus est inimí- cus. Jerúsa-lem,



Je-rúsa-lem, convértere ad Dóminum Dé-um tú- um.

Lectio II.
(*Tonus alius*)

Ex Cod. Silensi.

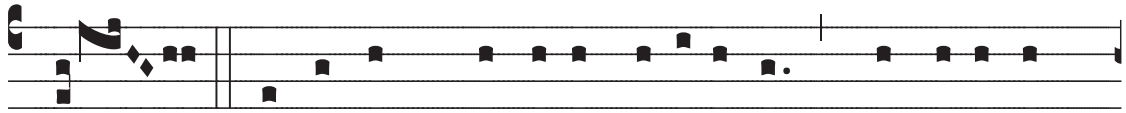
V AU. Et egréssus est a fí-li-a Sí-on ómnis
 décor é-jus: fácti sunt príncipes é-jus vél-ut a-rí-e-tes
 non inveni- éntes páscu-a: et abi-érunt ábsque forti-
 tú-di-ne ánte fá-ci-em subsequéntis. ZA-IN. Re-
 cordá-ta est Jerúsa-lem di-érum afflicti-ónis sú-æ et
 præva-ri-ca-ti-ónis, ómni-um de-side-rabí-li-um su-ó-
 rum, quae habú-erat a di-ébus antíquis, cum cáderet
 pópu-lus e-jus in mánu hostí-li, et non ésset auxi-li-
 á-tor: vidérunt e-am hó-stes et de-ri-sérunt sábbá-

ta é-jus. HETH. Peccá-tum peccávit Jerú-sa-lem,
 proptér-e-a instabí-lis fácta est: ómnes, qui glo-ri-
 fi-cábant é-am, sprevé-runt íl-lam, qui-a vidé-runt
 ignomí-ni-am e-jus: ípsa autem gém-ens conversa est
 retrórsum. TETH. Sórdes é-jus in pédibus é-jus, nec
 re-cordá-ta est fínis sú-i: depó-si-ta est vehemén-
 ter, non hábens conso-lató-rem: víde, Dómine, afflicti-
 ónem mé- am, quóni-am eréctus est inimí- cus. Jerúsa-
 lem, Jerúsa-lem, convértere ad Dóminum Dé-um tú- um.

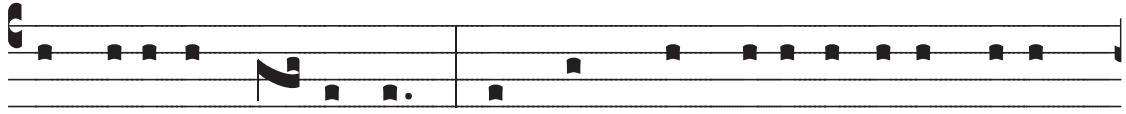
Lectio II.
(*Tonus alius*)

Ex Cod. Legionensi

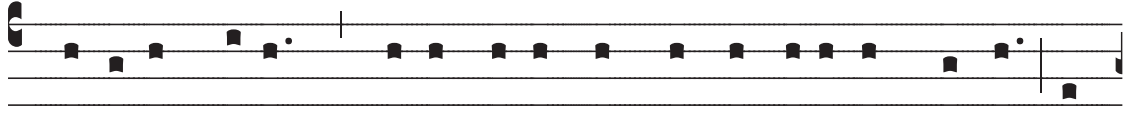
V AU. Et egréssus est a fí-li-a Sí-on ómnis
 décor é-jus : fácti sunt príncipes é-jus vél-ut a- rí-e-tes
 non inveni- éntes pá-scu-a : et abi-érunt ábsque forti-
 tú-dine ánte fá-ci-em subsequén-tis. ZA-IN. Recor-
 dáta est Jerúsa-lem di- érum afflicti- ónis sú-æ et præ-
 va-ri-ca-ti- ónis, ómni-um de-siderabí-li-um su- órum,
 quae habú-erat a di- ébus antí-quis, cum cáderet pópu-
 lus e-jus in mánu hostí-li, et non ésset auxi-li-á-tor :
 vidérunt e-am hóstes et de-ri-sérunt sá-bba-ta é-jus.



HETH. Peccá-tum peccávit Jerúsa-lem, proptére-a



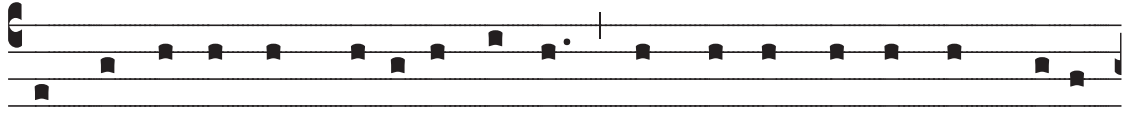
instabí-lis fá-cta est: ómnes, qui glori-fi-cábant é-am,



sprevérunt illam, qui-a vidé-runt ignomíni-am e-jus: íp-



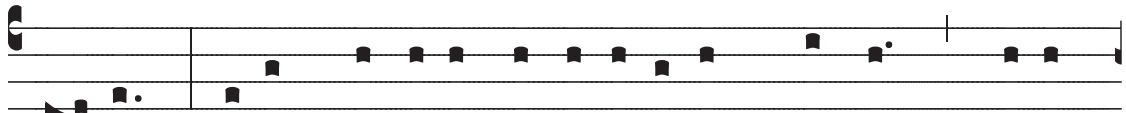
sa autem gémens conversa est retrór-sum. TETH.



Sórdes é-jus in pédibus é-jus, nec re-cordá-ta est fínis



sú-i: depó-si-ta est vehemé-nter, non hábens consola-



tó-rem: víde, Dómine, afflicti-ónem mé-am, quóni-



am eréctus est inimí-cus. Jerúsa-lem, Jerúsa-lem, con-



vértete ad Dóminum Dé-um tú-um.

Lectio III.

J OD. Mánum sú-am mí-sit hóstis ad ómni-a de-

sidera-bí-li-a é-jus: qui-a ví-dit géntes ingræssas

sanctu- á-ri-um sú-um, de quíbus præcéperas ne intra-

rent in ecclé-si-am tú-am. CAPH Omnis pópulus é-jus

gémens, et quærens pánem: dedérunt pre-ti-ósa quæ-

que pro cí-bo ad refocil-lándam ánimam. Víde, Dómi-

ne, et consídera, quóni-am fácta sum ví-lis. LA-

MED. O vos ómnes qui tran-sí-tis per ví-am, atténdi-

te, et vidéte si est dó-lor sicut dó-lor mé-us: quóni-

am vindemi-ávit me, ut locúsus est Dóminus in dí- e

í-rae furó-ris sú- i. MEM. De excélsó mí-sit ígnem

in óssibus mé-is, et erudívit me: expándit réte pedi-

bus mé- is, convértit me retrórsum: pósu-it me desolá-

tam, tóta di- e mœróre conféctam. NUN. Vi-gi-lávit

júgum iniqui- tátum me- árum : in manu é-jus convolútæ

sunt, et impó-sitæ cóllo mé- o: infirmáta est virtus

mé- a : dédit me Dóminus in mánu, de qua non pótero

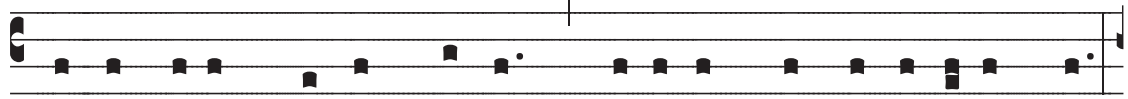
súrge-re. Jerúsa-lem, Je-rúsa-lem, convértere ad Dómi-

num Dé-um tú- um.

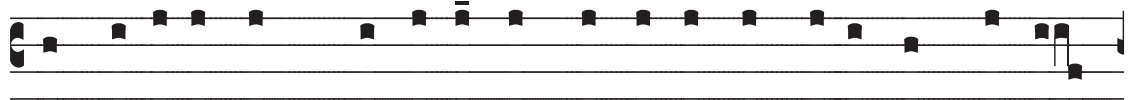
Lectio III.
(*Tonus alius*)

Ex Cod. Silensi

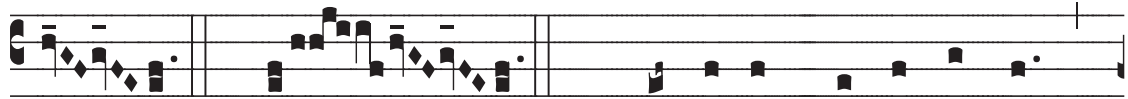
J **OD.** Mánum sú-am mí-sit hóstis ad
 ómni-a de-sidera-bí-li-a é-jus: qui-a ví-dit géntes
 ingræssas sanctu- á-ri-um sú-um, de quíbus præcéperas
 ne intra-rent in ecclé-si-am tú-am. **CAPH**
 Omnis pópulus é-jus gémens, et quærens pánem:
 dedérunt pre-ti-ósa quæque pro cí-bo ad refocillándam
 ánimam. Víde, Dómi-ne, et consíde-ra, quóni-am fác-
 ta sum ví-lis. **LAMED.** **O** vos ómnes
 qui transí-tis per ví-am, atténdi-te, et vidé-te si est



dó-lor sícut dó-lor mé-us : quóni-am vindemi-ávit me,

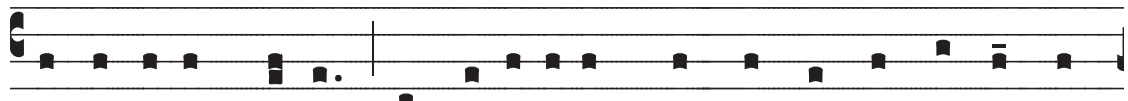


ut locútus est Dóminus in dí-e í-ræ furó-ris sú-i.

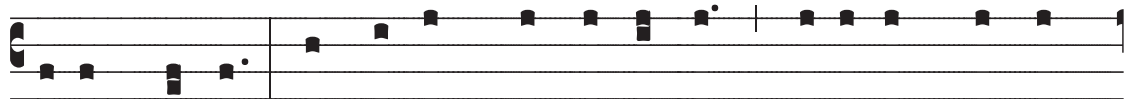


MEM.

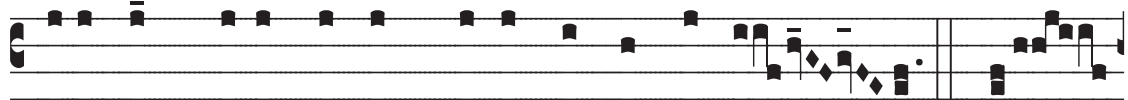
De excélso mí-sit ígnem



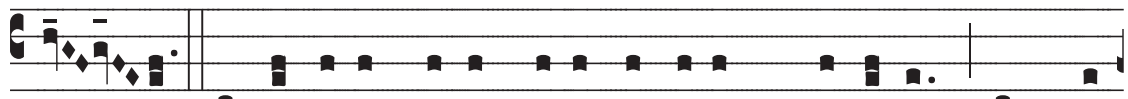
in óssibus mé-is, et erúdivit me : expándit ré-te pe-



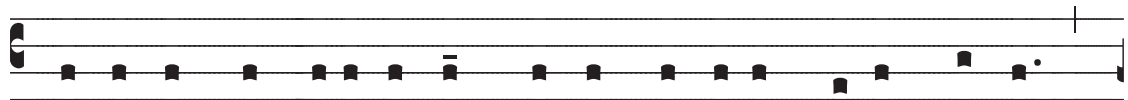
dibus mé-is, convértit me retrórsum : pósu-it me de-



solá-tam, tóta di-e mæró-re conféctam. NUN.



Vi-gi-lávit júgum iniqui-tátum me-árum : in ma-



nu é-jus convolútæ sunt, et impó-sitæ cóllo mé-o :

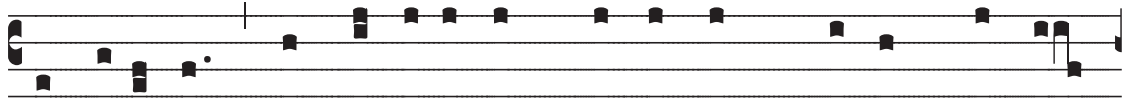


infirmáta est virtus mé-a : dédit me Dóminus in má-

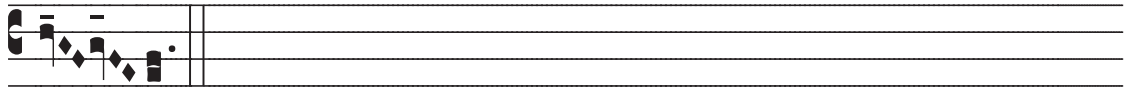


nu, de qua nó pótero súrge-re. Jerúsa-lem,

FERIA V. IN COENA DOMINI

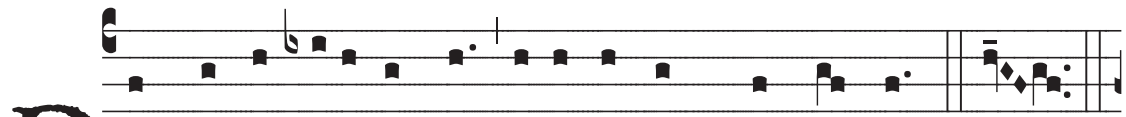


Je-rúsa-lem, convértere ad Dómi-num Dé-um tú-um.

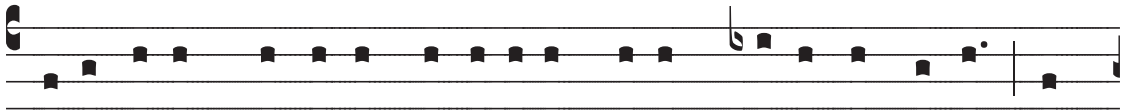


FERIA VI. IN PARASCEVE

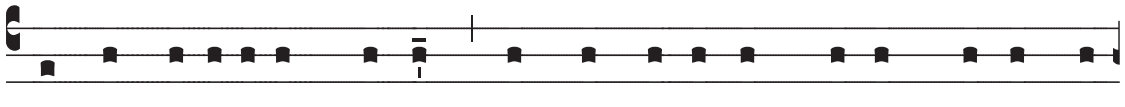
Lectio I.



DE Lamentati-ó-ne Jeremí-ae Prophé-tae. HETH.



Cogi-távit Dóminus dissipáre múrum fí-li-æ Sí-on; te-



téndit funículum sú-um, et non avértit mánum su-am a



perdi-ti-ó-ne : luxítque antemurá-le, et múrus pári-ter



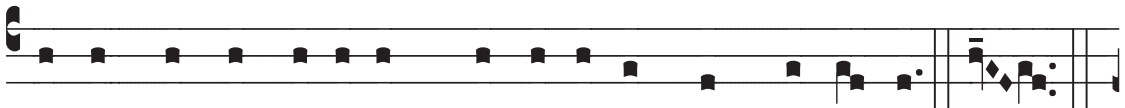
dissipá-tus est. TETH. De-fíxæ sunt in térra pórtæ é-



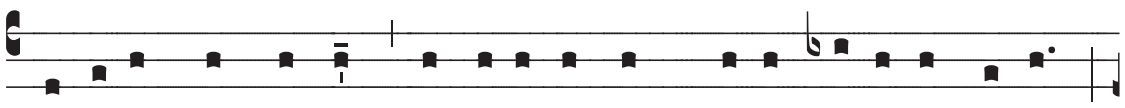
jus, perdí-dit et contrívit véctes é-jus; régem é-jus et



príncipes é-jus in génti-bus : non est lex, et prophétæ



é-jus non invenérunt vi-si-ónem a Dómi-no. JOD.



Sedérunt in térra, conticu-é-runt sénes fí-li-æ Si-on;

FERIA VI. IN PARASCEVE

conspersérunt cíne-re cápi-ta su-a, accíncti sunt ci-lí-ci-

is, abjecé-runt in térram cápi-ta su-a vírgines Je-rú-

sa-lem. CAPH. De-fe-cérunt præ lácrimis ócu-li me-

i, conturbá-ta sunt vísce-ra me-a; effúsum est in

térra jécur mé-um súper contri-ti-ó-ne fí-li-æ pópu-

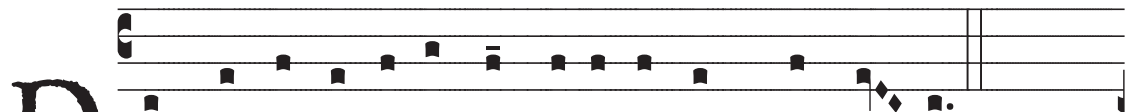
li me-i, cum de-fí-ce-ret párvu-lus et láctens in plá-

te-is óppi-di. Je-rú-sa-lem, Je-rú-sa-lem, convérte-re

ad Dó-mi-num Dé-um tú-um.

Lectio I.
(*Tonus alius*)

Ex Cod. Silensi



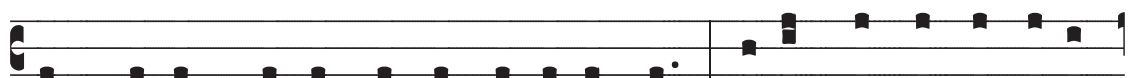
D E Lamenta-ti-ó-ne Jeremí-ae Prophé-tae.



HETH. Cogi-távit Dóminus dissipáre múrum




fí-li-æ Sí-on; te-téndit funícu-lum sú-um, et non avér-



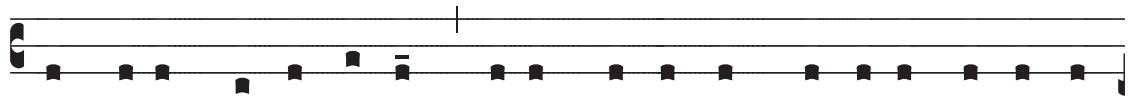
tit mánum su-am a perdi-ti-ó-ne : luxítque antemurá-



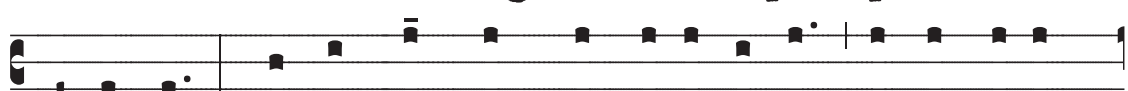
le, et múrus pári-ter dissipá-tus est. TETH.



De-fíxæ sunt in térra pórtæ é-jus, perdí-dit et



contrívit véctes é-jus; régem é-jus et príncipes é-jus in



génti-bus : non est lex, et prophétæ é-jus non invené-



runt vi-si-ónem a Dómi-no. JOD.



Sedérunt in térra, conticu-é-runt sénes fí-li-æ Si-on;

conspersérunt cíne-re cápi-ta su-a, accíncti sunt ci-lí-

ci-is, abjecérunt in térram cápi-ta su-a vírgines Je-rú-

sa-lem. CAPH. De-fe-cérunt præ lácrimis

ócu-li me-i, conturbá-ta sunt vísce-ra me-a; effúsum

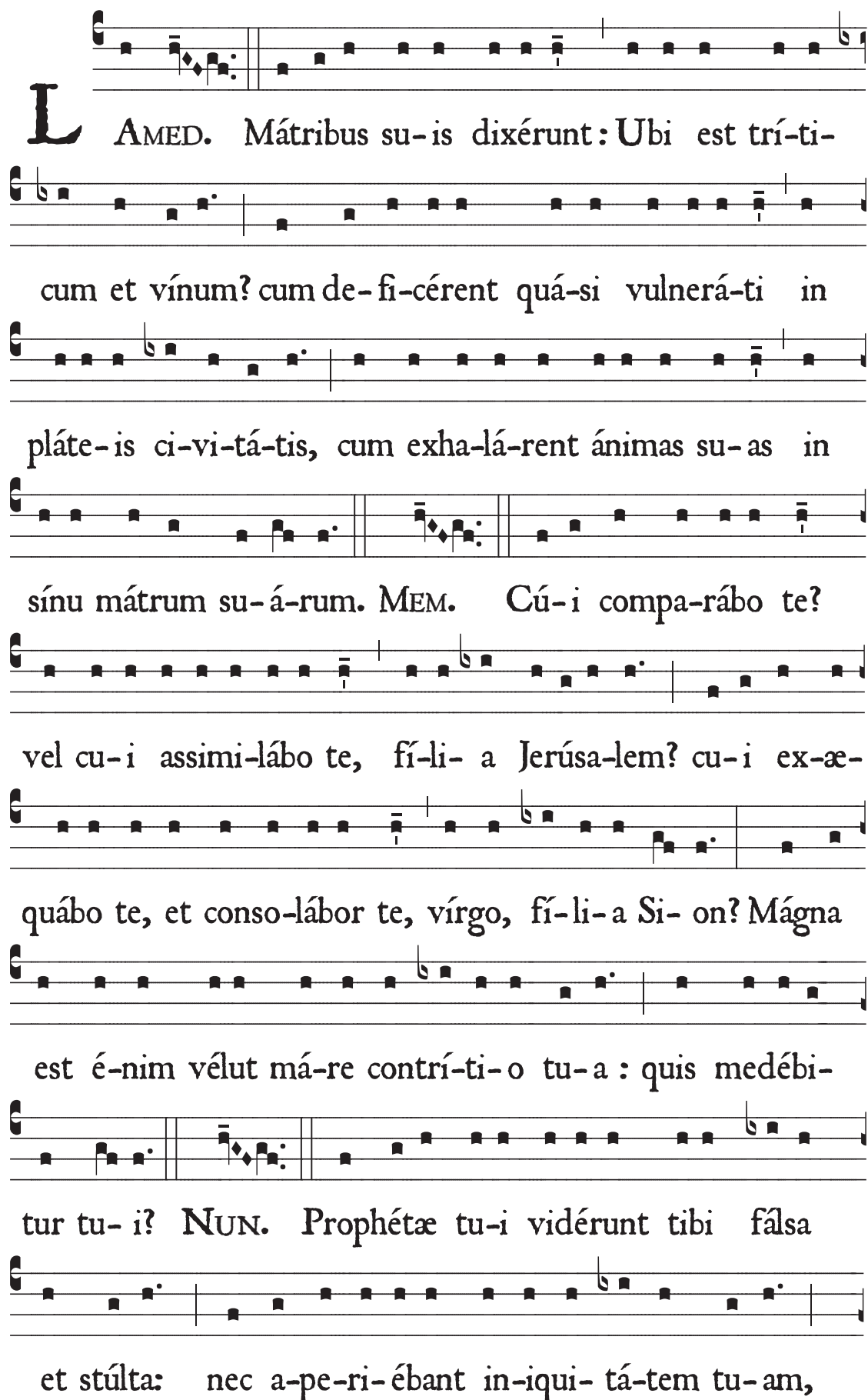
est in térra jécur mé-um súper contri-ti-ó-ne fí-li-æ

pópu-li me-i, cum de-fí-ce-ret párvu-lus et láctens in

pláte-is óppi-di. Jerúsa-lem, Jerú-sa-lem, con-

verte-re ad Dóminum Dé-um tú-um.

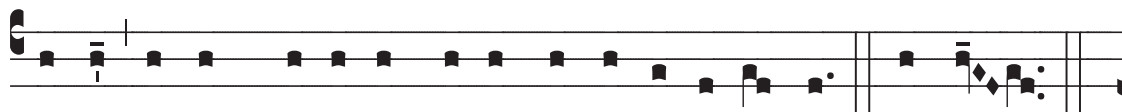
Lectio II.



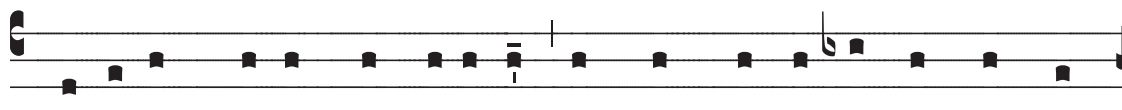
L AMED. Mátribus su-is dixerunt: Ubi est trí-ti-
cum et vínus? cum de-fi-cérent quá-si vulnerá-ti in
pláte-is ci-vi-tá-tis, cum exha-lá-rent ánimas su-as in
sínu mátrum su-á-rum. MEM. Cú-i compa-rábo te?
vel cu-i assimi-lábo te, fí-li- a Jerúsa-lem? cu-i ex-æ-
quábo te, et conso-lábor te, vírgo, fí-li- a Si- on? Mágna
est é-nim vélut má-re contrí-ti-o tu-a : quis medébi-
tur tu- i? NUN. Prophétæ tu-i vidérunt tibi fál-sa
et stúlta: nec a-pe-ri-ébant in-iqui- tá-tem tu-am,



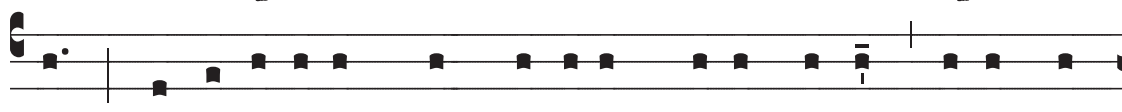
ut te ad poenitenti-am provo-cá-rent: vidé-runt autem



tí-bi assumpti-ónes fál-sas, et e-jecti-ó-nes. SAMECH.



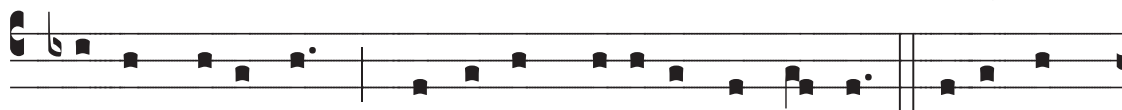
Plausérunt super te mánibus ómnes transe-úntes per vi-



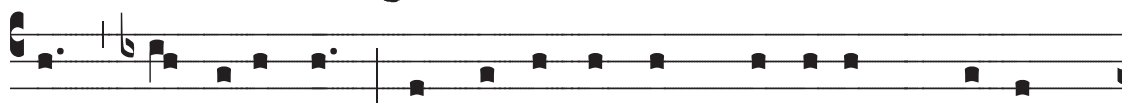
am: si-bi-lavérunt, et movérunt cáput sú-um súper fí-



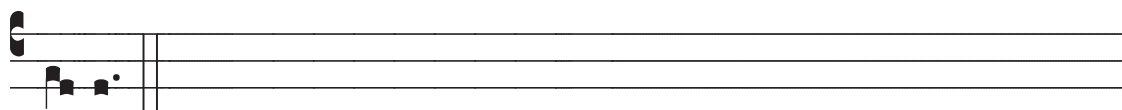
li- am Jerú-sa-lem: Haécci-ne est urbs, dicéntes, per-



fécti decó-ris, gáudi-um univérsæ térræ? Jerú-sa-



lem, Je-rúsa-lem, convérte-re ad Dóminum Dé-um

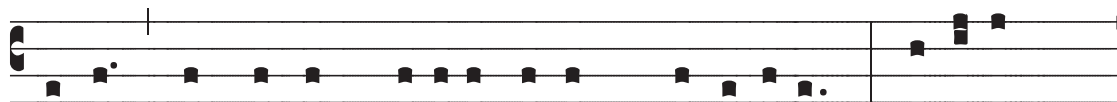


tú-um.

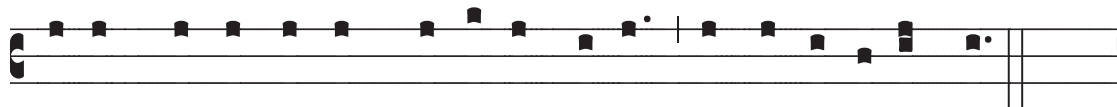
Lectio II.
(*Tonus alius*)

Ex Cod. Toletano

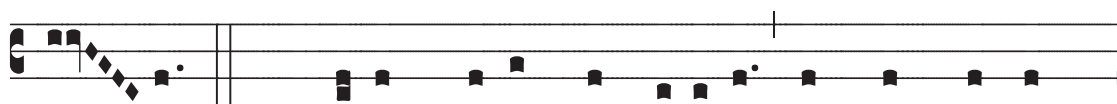
L AMED. Mátribus su-is dixerunt: Ubi est trí-ti-
cum et vínum? cum de-fi-cérent quá-si vulnerá-ti in
pláte-is ci-vi-tá-tis, cum exha-lá-rent á-nimas su-as in
sínu mátrum su-á-rum. MEM. Cú-i compa-
rábo te? vel cu-i assimi-lábo te, fí-li-a Jerúsa-lem? cu-
i ex-æquábo te, et conso-lábor te, vírgo, fí-li-a Si-
on? Mágna est é-nim vé-lut máre contrí-ti-o tu-a: quis
medébi-tur tu-i? NUN. Prophétæ tu-i vidérunt
ti-bi fálsa et stúlta: nec a-pe-ri-ébant in-iqui-tátem



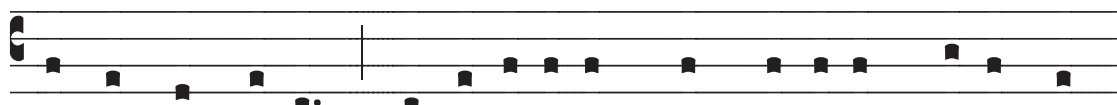
tu-am, ut te ad poenitenti-am provocarent: vidérunt



autem tí-bi assumpti-ónes fál-sas, et e-jecti-ó-nes.



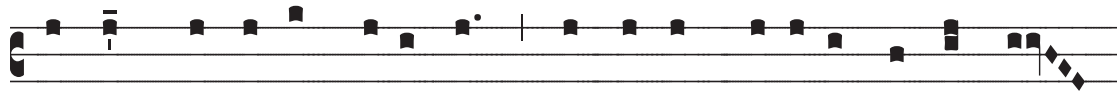
SA- MECH. Plausérunt super te mánibus ómnes transe-



úntes per vi-am: si-bi-lavérunt, et movérunt cáput sú-



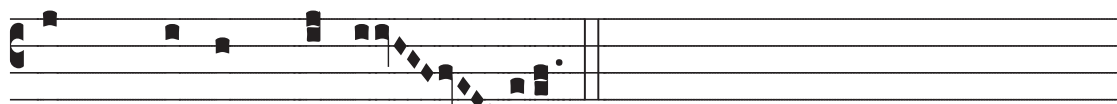
um súper fí-li-am Jerúsa-lem: Haécci-ne est urbs, di-



céntes, perfécti decó-ris, gáudi-um univérsæ térræ?



Jerúsa-lem, Jerúsa-lem, convérte-re ad Dómi-



num Dé-um tú-um.

Lectio III.



A - LEPH. Ego vir vídens pauper-tá-tem mé-am



in vírga indigna-ti-ó-nis é-jus. ALEPH. Me minávit,



et addúxit in ténebras, et non in lú-cem. ALEPH.



Tántum in me vértit et convértit mánum sú-am tó-ta



di-e. BETH. Vetústam fé-cit péllem mé-am et cárnem



mé-am: contrívit óssa mé-a. BETH. Ædi-ficávit in



gýro me-o, et circumdédit me félle et labó-re.

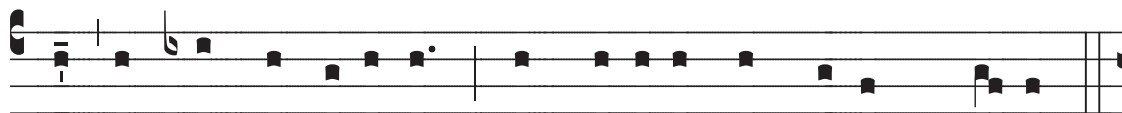


BETH. In tenebró-sis collocávit me, quá-si mórtu-os

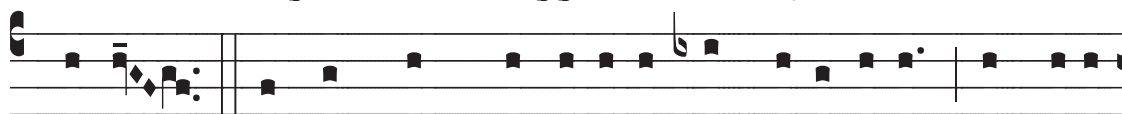


sempitérnos. GHIMEL. Circumædi-fi-cávit advérsam

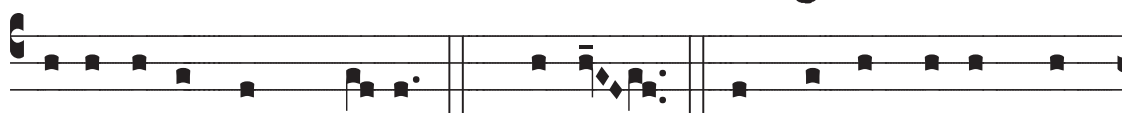
FERIA VI. IN PARASCEVE



me, ut non egrédi-ar; aggravávit cómpedem mé-um.



GHIMEL. Sed et, cum clamávero, et rogávero, exclúsit



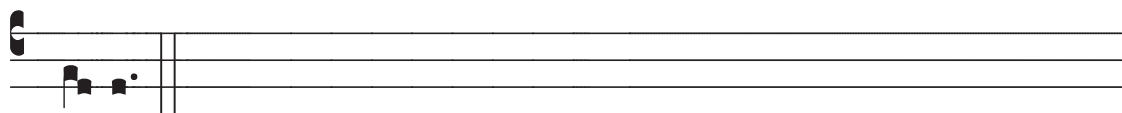
ora-ti-ó-nem me-am. GHIMEL. Conclú-sit vi-as me-



as la-pídibus quádris, sémi-tas mé-as subvér-tit. Jerú-



sa-lem, Je-rúsa-lem, convérte-re ad Dóminum Dé-um



tú-um.

Lectio III.
(*Tonus alius*)

Ex Cod. Legionensi

A - LEPH. Ego vir vídens paupertá-tem
 mé- am in vírga indigna-ti-ó- nis é-jus. A-
 LEPH. Me minávit, et addúxit in té-ne-bras, et
 non in lú-cem. ALEPH. Tántum in me vér- tit
 et convértit má-num sú-am tó- ta di- e. BETH.
 Vetústam fé-cit péllem mé-am et cárnem
 mé- am: contrívit ós-sa mé-a. BETH. Ædi-fi-
 cávit in gýro me- o, et circumdédit me félle
 et labó-re. BETH. In tenebró-sis collocávit



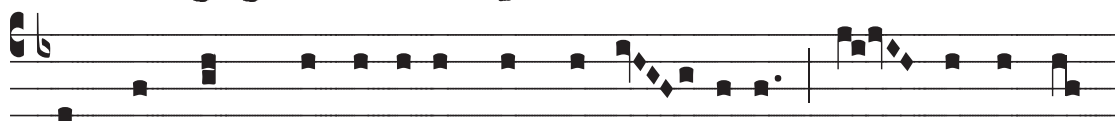
me, quá-si mórtu-os sem-pi-térnos. GHIMEL.



Circumædi-ficá-vit advérsus me, ut non egré- di-



ar; ag-gra-vávit cómpedem mé-um. GHIMEL.



Sed, et cum clamávero, et rogá- vero, ex- dú-sit o-



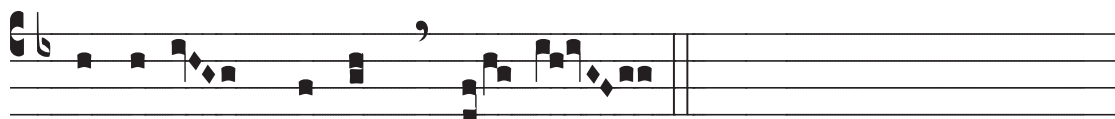
ra-ti- ónem me-am. GHIMEL. Conclú-sit vi-as



me-as lapí-dibus quá- dris, sé- mi-tas mé- as sub-




vér-tit. Jerúsa-lem, Je-rú- sa-lem, con-vérte-re ad



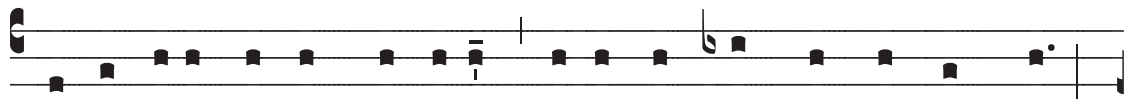
Dóminum Dé-um tú-um.

SABBATO SANCTO

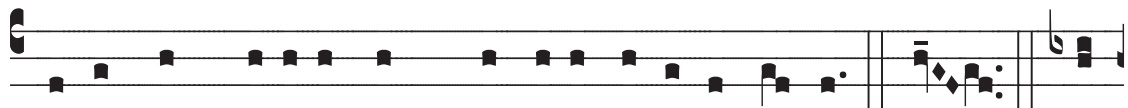
Lectio I.



DE Lamenta-ti-ó-ne Jeremí-æ Prophé-tæ. HETH.



Mi-se-ricórdi-æ Dómini, qui-a non súde-mus consúpti:



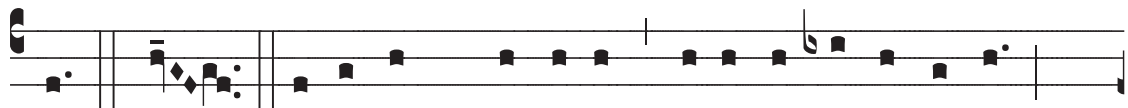
qui-a non defecé-runt mi-sera-ti-ónes é-jus. HETH. Nó-



vi di-lúculo, múlta est fídes tu-a. HETH. Pars me-a



Dóminus, díxit ánima me-a: proptére-a exspectábo e-



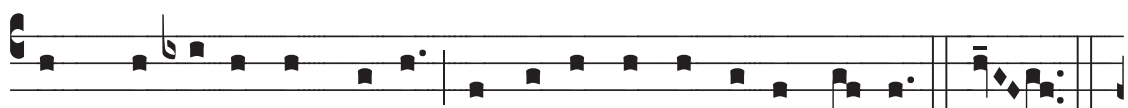
um. TETH. Bónus est Dóminus speránti-bus in e-um,



ánimæ quærénti íl-lum. TETH. Bonum est præstolá-ri



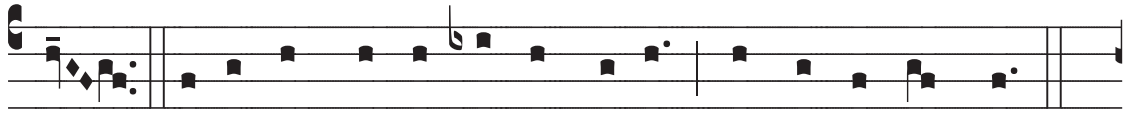
cum si-lénti-o salu-táre De-i. TETH. Bónum est vi-ro,



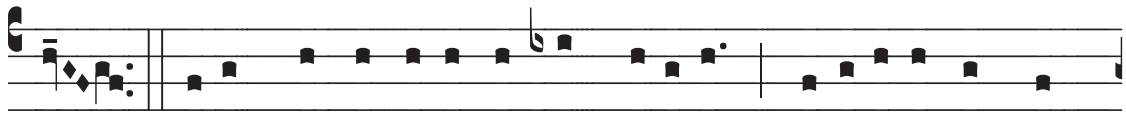
cum portáve-rit júgum ab ado-lescénti-a su-a. JOD.



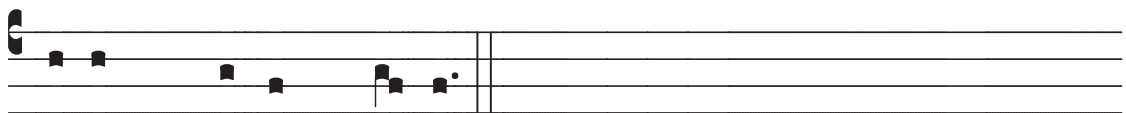
Sedébit so-li-tá-ri-us, et tacébit : quí-a levávit súper se.



JOD. Pónet in púlve-re os sú-um, si fórte sit spes.



JOD. Dábit percu-ti-énti se maxíllam, saturábi-tur op-
próbri-is. Jerúsa-lem, Je-rúsa-lem, convértere ad Dó-

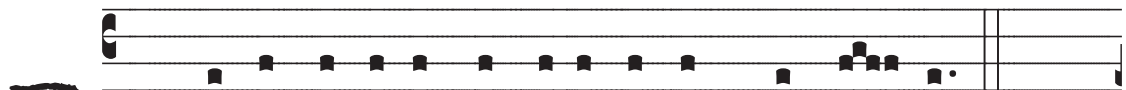


minum Dé-um tú-um.

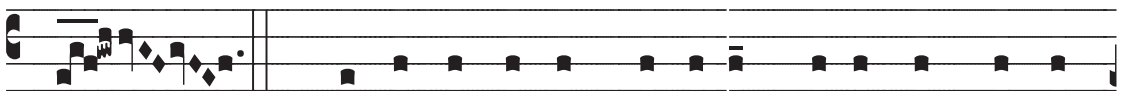
Lectio I.

(*Tonus alius*)

Ex Cod. Silensi



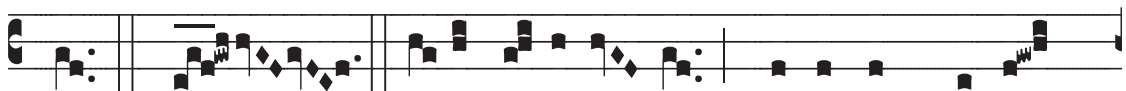
D È Lamenta-ti-ó-ne Jeremí-æ Prophé- tæ.



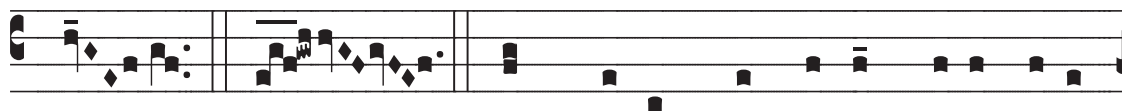
HETH. Mi-se-ri-córdi-æ Dómini, qui-a non súmus



consúmpti : qui-a non defecérunt mi-sera-ti-ónes é-



jus. HETH. Nóvi di-lúcu-lo, múlta est fídes



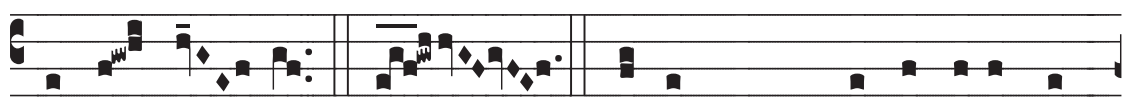
tu- a. HETH. Pars me- a Dó- minus, díxit áni-



ma me- a: proptére- a exspectábo e- um. TETH.



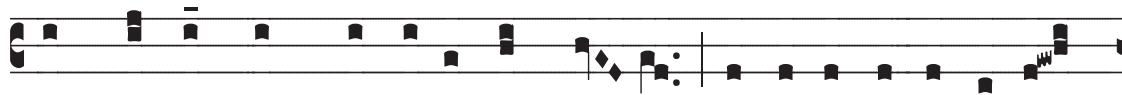
Bónus est Dóminus sperántibus in e- um, ánimæ quæ-



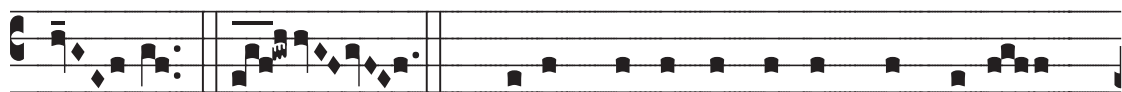
rénti íl- lum. TETH. Bonum est præsto- lári cum



si- lénti- o salu- tá- re De- i. TETH. Bónum



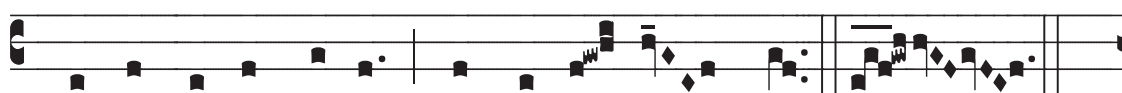
est vi- ro, cum portáve- rit jú- gum ab ado- lescénti- a



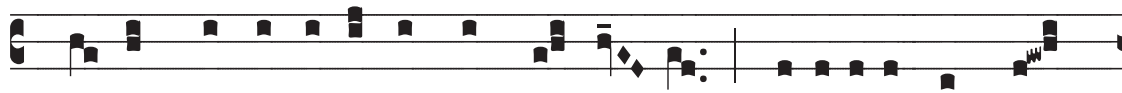
su- a. JOD. Sedébit so- li- tá- ri- us, et tacé-



bit: quí- a levá- vit súper se. JOD. Pónet in



púlve- re os sú- um, si fórte sit spes. JOD.

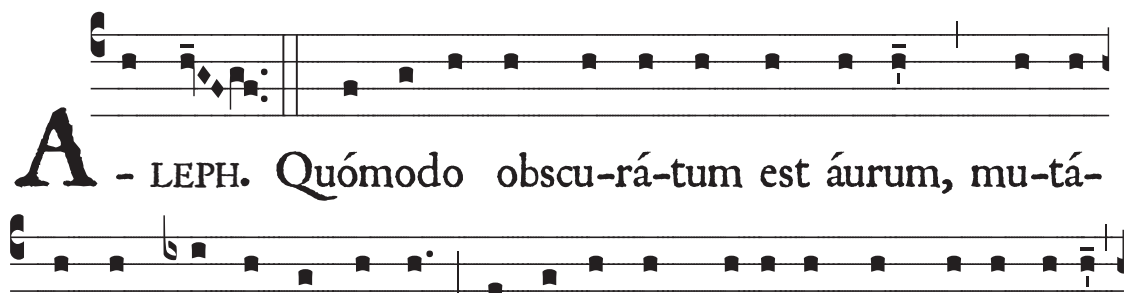


Dá- bit percu- ti- énti se ma- xíl- lam, saturábi- tur op-



pró-bri- is. Jerúsa-lem, Jerúsa-lem, convértere ad Dó-
minum Dé-um tú- um.

Lectio II.

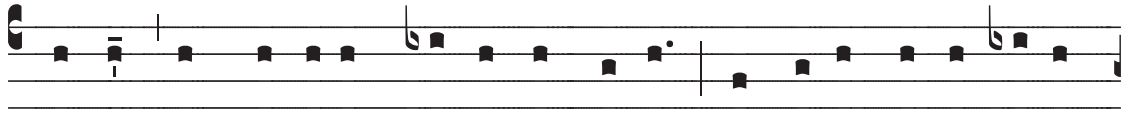


A - LEPH. Quómodo obscu-rá-tum est áurum, mu-tá-
tus est có-lor óptimus! dispérsi sunt lápides sanctu-á-ri-i
in cápi-te ómni-um plate-á- rum! BETH. Fí-li-i Si-on
íncly-ti, et amícti áuro prímo : quómodo reputá-ti
sunt in vasa téste-a, opus mánu-um fígu-li? GHI-
MEL. Sed et lámí-æ nudavérunt mámmam, lactavérunt
cátu-los su-os : fí-li-a pópu-li me-i crudé-lis quá-si

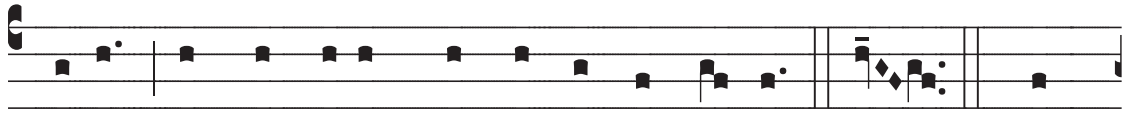
SABBATO SANCTO



strúthi-o in desérto. DALETH. Adhaésit língua lac-



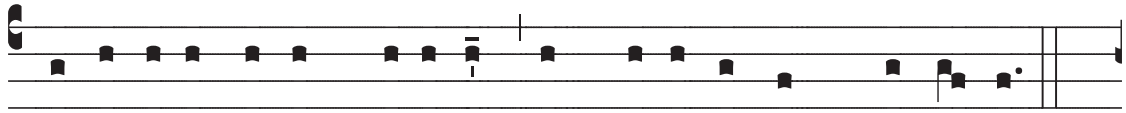
téntis ad pa-látum é-jus in sí-ti: párvu-li pet-i- é-runt



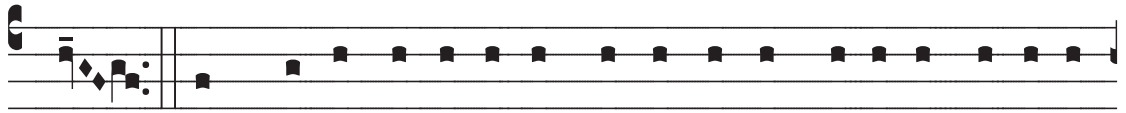
pánem, et non erat qui frángé-ret é- is. HE. Qui



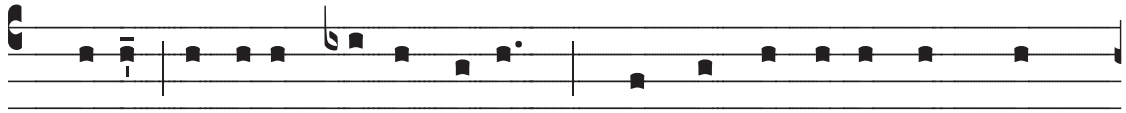
vescebántur vo-luptu-óse, inter-i- é-runt in ví- is: qui



nutri-ebántur in cróce-is, amplexá-ti sunt stérco-ra.



VAU. Et má-jor effécta est i-níqui-tas fí-li-æ pópu-li



me-i peccáto Sodomórum, quæ subvérsa est in mo-



ménto, et non cepérunt in é-a má-nus. Jerúsa-lem, Je-



rúsa-lem, con-vértere ad Dóminum Dé-um tú- um.

Lectio II.
(*Tonus alius*)

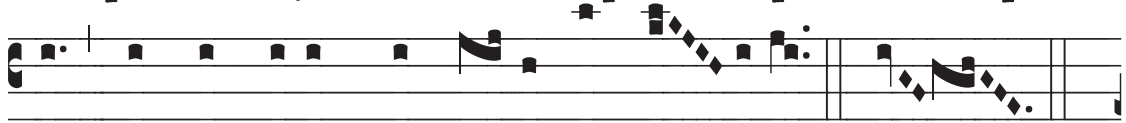
Ex Cod. Legionensi

A - LEPH. Quómo- do obscurátum est áu- rum,
 mutátus est có-lor ó- ptimus, dispérsi sunt lápides
 sanctu- á-ri- i in cápi- te ómni- um plate- á- rum.

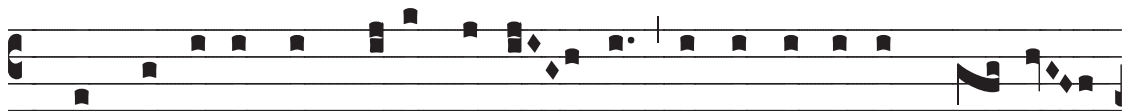
BETH. Fí- li- i Si- on ínclý- ti, et amícti áuro
 prí- mo : quómo- do repu- táti sunt in vása téste- a,
 opus mánu- um fí- gu- li? GHIMEL. Sed et lámí-
 æ nudavérunt mámmam, lactavérunt cátu- los su- os :
 fí- li- a pópu- li me- i crudé- lis quá- si strúthi- o in
 de- sérto. DALETH. Adhaésit língua lactén- tis



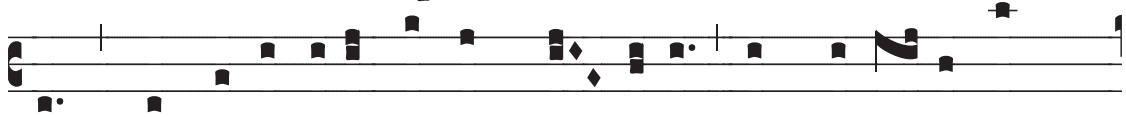
ad palátum éjus in sí- ti: párvu-li pe-ti-érunt pá-



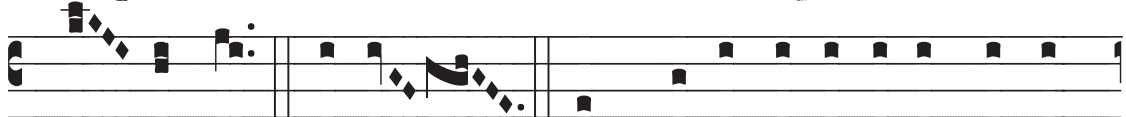
nem, et non erat qui fránge-ret é- is. HE.



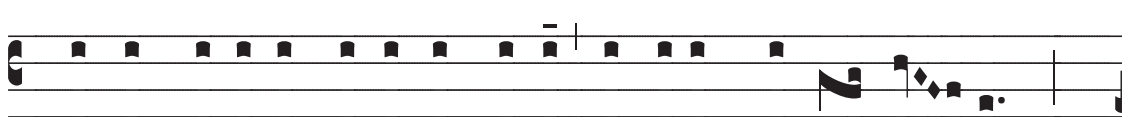
Qui vescebántur voluptu-ó- se, inter-i- érunt in ví-



is; qui nutri-ebántur in cró- ce-is, amplexá-ti sunt



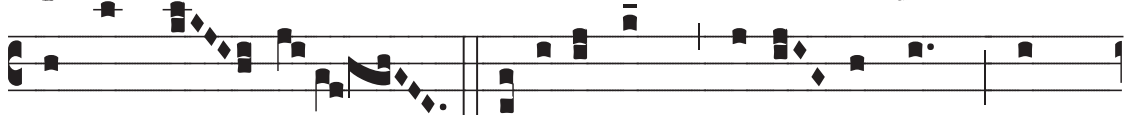
stér- co-ra. VA-U. Et má-jor effécta est i-ní-



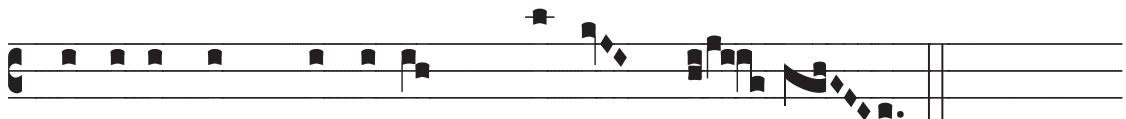
qui-tas fí-li-æ pópu-li me-i peccáto Sodo-mó- rum,



quæ subvérta est in momén- to, et non cepérunt in



é-a má- nus. Jerúsa-lem, Jerú- sa-lem, con-



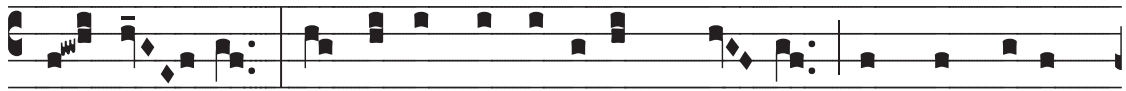
vértere ad Dóminum Dé-um tú- um.

Lectio II.
(*Tonus alius*)

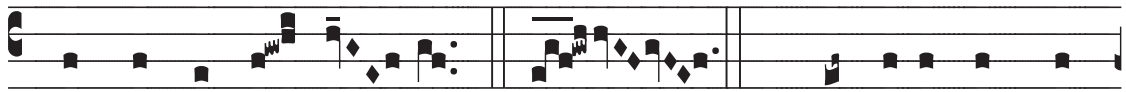
Ex Cod. Silensi

A - LEPH. Quómo- do obscurátum est áu- rum, mu-
 tátus est có-lor opti- mus, dispérsi sunt lápides sanctu-
 ári- i in cápi-te ómni-um plate- á- rum. BETH.
 Fí-li-i Si-on ín-cly-ti, et amícti áuro prí- mo :
 quómo- do repu-tá-ti sunt in vása téste-a, opus mánu-um
 fí- gu-li? GHIMEL. Sed et lámí-æ nudavérunt má-
 mam, lactavérunt cátu-los su- os : fí-li-a pópu-li me-
 i crudé-lis quá-si strúthi-o in de- sér- to. DALETH.
 Adhaésit língua lactén- tis ad pa-látum é-jus

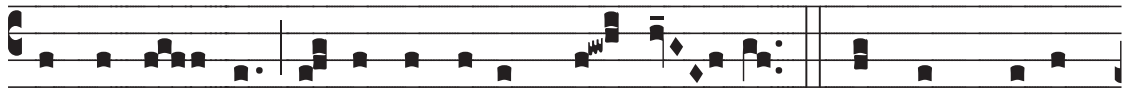
SABBATO SANCTO



in sí- ti: párvu-li pe-ti-érunt pá-nem, et non erat



qui fránge-ret é- is. HE. Qui vescebántur vo-



luptu-ó- se, inter-i-érunt in ví- is; qui nutri-ebán-



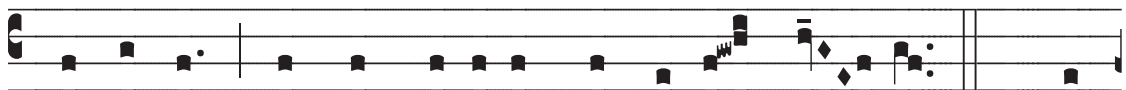
tur in cróce- is, amplexá-ti sunt stérco- ra. VA-U.



Et má-jor effécta est iníqui-tas fí-li-æ pópu-li



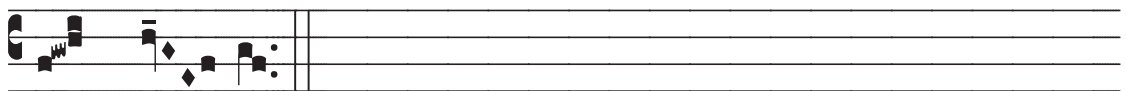
me- i peccá-to Sodo-mó- rum, quæ subvêrsa est in



moménto, et non cepérunt in é-a má- nus. Je-rú-



sa-lem, Jerú-sa-lem, convértere ad Dóminum Dé-



um tú- um.

Lectio III.

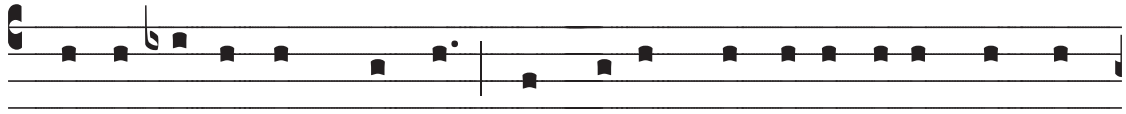


I Ncí-pit Orá-ti-o Je-remí-ae prophé-tae. Recordá-
 re, Dómine, quid ac-cíde-rit nóbis: intu-é-re et réspi-
 ce oppróbri-um nóstrum. Hæ-rédi-tas nóstra vérsa est
 ad a-li-énos, dómus nóstræ ad extráne-os. Pupíl-li fac-
 ti súmus ábsque pátre, mátres nóstræ quási vídu-æ. A-
 quam nóstram pe-cúni-a bíbimus; lígna nóstra pré-ti-o
 comparávimus. Cerví-cibus nostris minabámur, lássis non
 dabátur réqui-es. Ægýpto dédimus mánum et Assýri- is,
 ut saturarémur pá- ne. Pátres nóstri pecca-vérunt, et

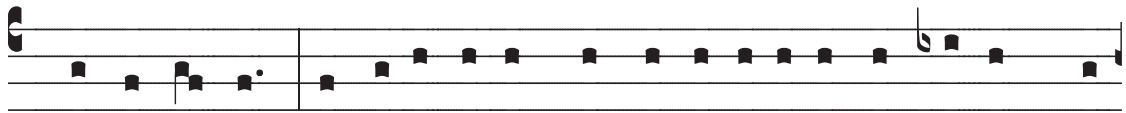
SABBATO SANCTO



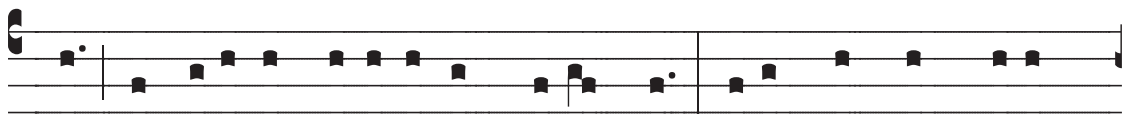
non sunt : et nos iniqui-tates e-orum portávimus. Sérvi



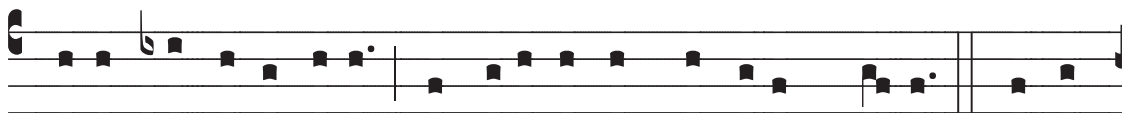
domi-ná-ti sunt nóstri : non fú-it qui redímeret de má-



nu e-ó-rum. In animábus nóstris afferebámus pánem nó-



bis, a fáci-e gládi-i in desér-to. Péllis nóstra, quási



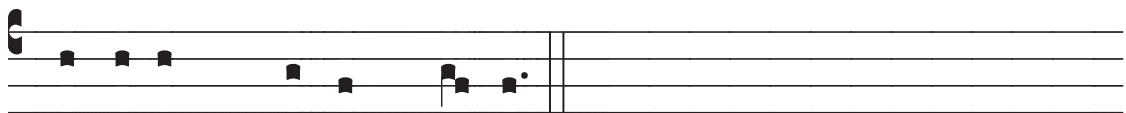
clibá-nus exústa est, a fáci-e tempestátum fámis. Mu-li-



éres in Sí-on humi-li-avérunt, et vírgines in civi-tá-



tibus Júda. Jerúsa-lem, Je-rúsa-lem, con-vértere ad



Dóminum Dé-um tú-um.

Lectio III.
(*Tonus alius*)

Ex Cod. Silensi (Cf. Vatic. Edit.)

INCIPIT o-rá-ti-o Je-remí-ae prophé-tae. Recordá-
re, Dómine, quid accíde-rit nó-bis: intu-é-re et réspi-
ce oppró-bri-um nóstrum. Hæ-rédi-tas nóstra vérsa
est ad a-li-é-nos, dómus nó-stræ ad extrá-ne-os.
Pupilli facti súmus ábsque pá-tre, mátres nóstræ quá-
si ví-du-æ. A-quam nóstram pecúni-a bíbi-mus: lí-
gna nó-stra pré-ti-o compará-vimus. Cerví-cibus no-
stris mina-bá-mur, lássis non dabá-tur ré-qui-es. Æ-
gýpto dédimus má-num et Assý-ri-is, ut satura-



rémur páne. Pátres nóstri peccavérunt, et non sunt : et
 nos iniqui-tátes e-órum portá-vimus. Sérvi dominá-ti
 sunt nóstri : non fú- it qui redímeret de má- nu
 e- órum. In animábus nóstris affe-rebámus pánem nó-
 bis, a fá-ci- e gládi-i in de- sérto. Pél-lis nóstra,
 quá-si clibánuS exústa est, a fá- ci- e tempe-stá-tum
 fámis. Mu-li- éres in Sí- on humi-li- a- vé- runt, et vírgi-
 nes in ci- vi- tá- tibus Júda. Je- rúsa- lem, Jerúsa- lem,
 convér- te- re ad Dóminum Dé- um tú- um.

Lectio III.
(*Tonus alius*)

Ex Cantatorio Escorialensi.

I Ncí-pit orá- ti-o Je-re-mí- ae prophé- tae. Re-
 cordá-re, Dómine, quid accí-de-rit nó- bis : intu-é-re,
 et ré- spi-ce oppróbri-um nó- strum. Hæ-rédi-tas
 nóstra vérsa est ad a-li-é- nos, dómus nóstræ ad
 extrá- ne-os. Pupíl-li facti sú- mus ábsque pá- tre,
 mátres nóstræ quá- si ví- du-æ. A-quam nóstram
 pe-cúni-a bí- bimus : lígna nostra pré-ti-o compa-
 rá- vimus. Cerví-cibus nostris minabá-mur, lás- sis
 non dabá- tur ré- qui-es. Ægýpto dédimus má- num

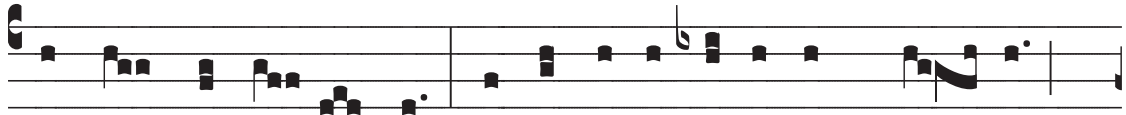
SABBATO SANCTO



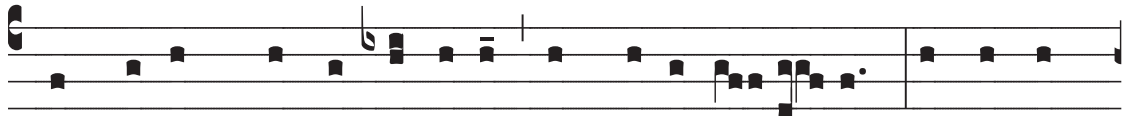
et Assý-ri- is, ut sa-tu-ra-ré-mur pá- ne. Pátres nóstri



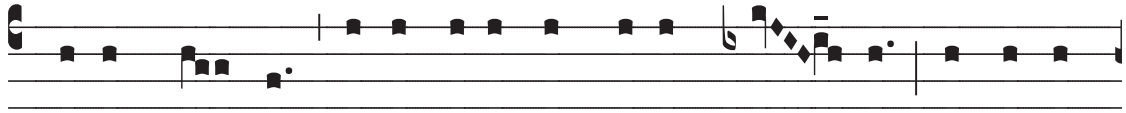
peccavé- runt, et non sunt : et nos in-iqui-tá-tes e-



ó-rum portá- vi- mus. Sérví domi-ná-ti sunt nó- stri:



non fú- it qui re-dímeret de mánu e- ó-rum. In a-ni-



mábus nó-stris affe-rebá-mus pánem nó- bis, a fá-ci-



e gládi-i in de-sér- to. Péllis nóstra, quá-si cli- bánus



exústa est a fá-ci-e tempestá-tum fá- mis. Mu-li-



é-res in Sí-on humi-li-a-vé-runt, et vír- gines in ci-



vi-tá-tibus Jú- da. Je-rúsa-lem, Je-rúsa- lem, con-



vér- te-re ad Dóminum Dé- um tú- um.