

Friday of Ember Week in Lent

Introit

Intr.
4.



D E ne- ces- si- tá- tibus mé- is * é- ri- pe me
Dó- mi- ne : ví- de humi- li- tá- tem mé- am et labó-
rem mé- um, et dimít- te ómni- a peccá- ta
mé- a. *Ps.* Ad te Dómine levávi á- nimam mé- am : *
Dé- us mé- us in te confído, non e- rubéscam. Gló- ri- a Pa-
tri. E u o u a e.

Friday of Ember Week in Lent

Gradual

Grad.

1.

S

Al- vum fac * sér- vum tú- um, Dé-

us mé- us, spe-rántem in te.

∇. Auri-bus pér- ci-pe

Dó- mi-ne o-ra-ti-ónem * mé- am.

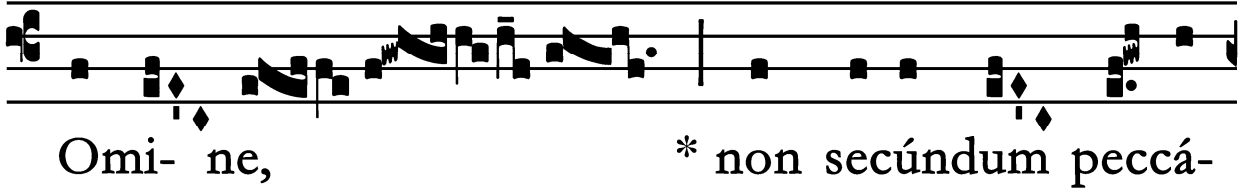
Friday of Ember Week in Lent

Tract

Tract.

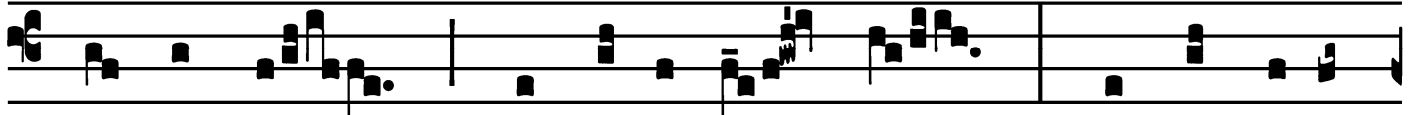
2.

D



Omi- ne,

* non secúndum peccá-



ta nóstra,

quæ fé-cimus nos :

neque secún-

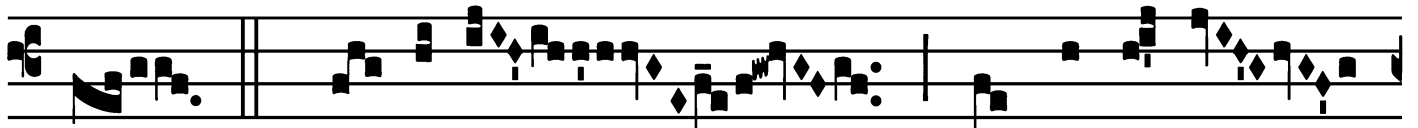


dum in-iqui-tá-tes nó- stras

re-trí-

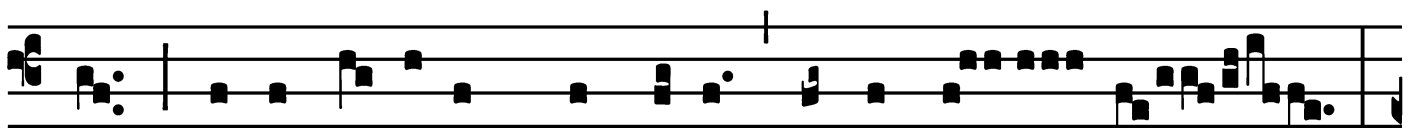
bu-

as nó- bis.



∇. Dó-mine,

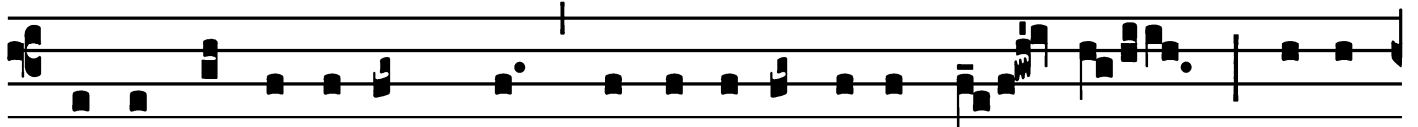
ne memí-ne-



ris

in-iqui- tatum nostrárum antiquá-

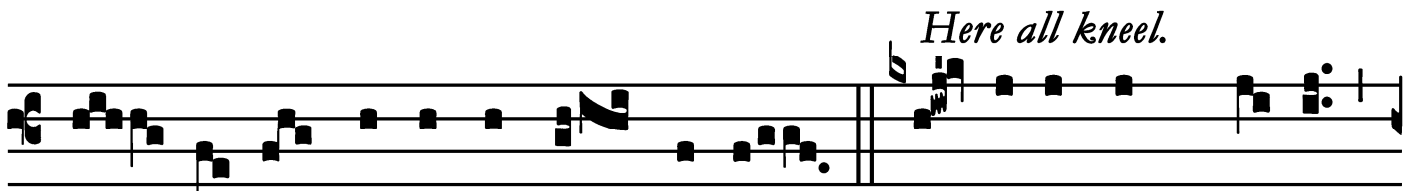
rum :



ci-to

antí-cipent nos mi-se-ricórdi-æ tú- æ,

qui- a

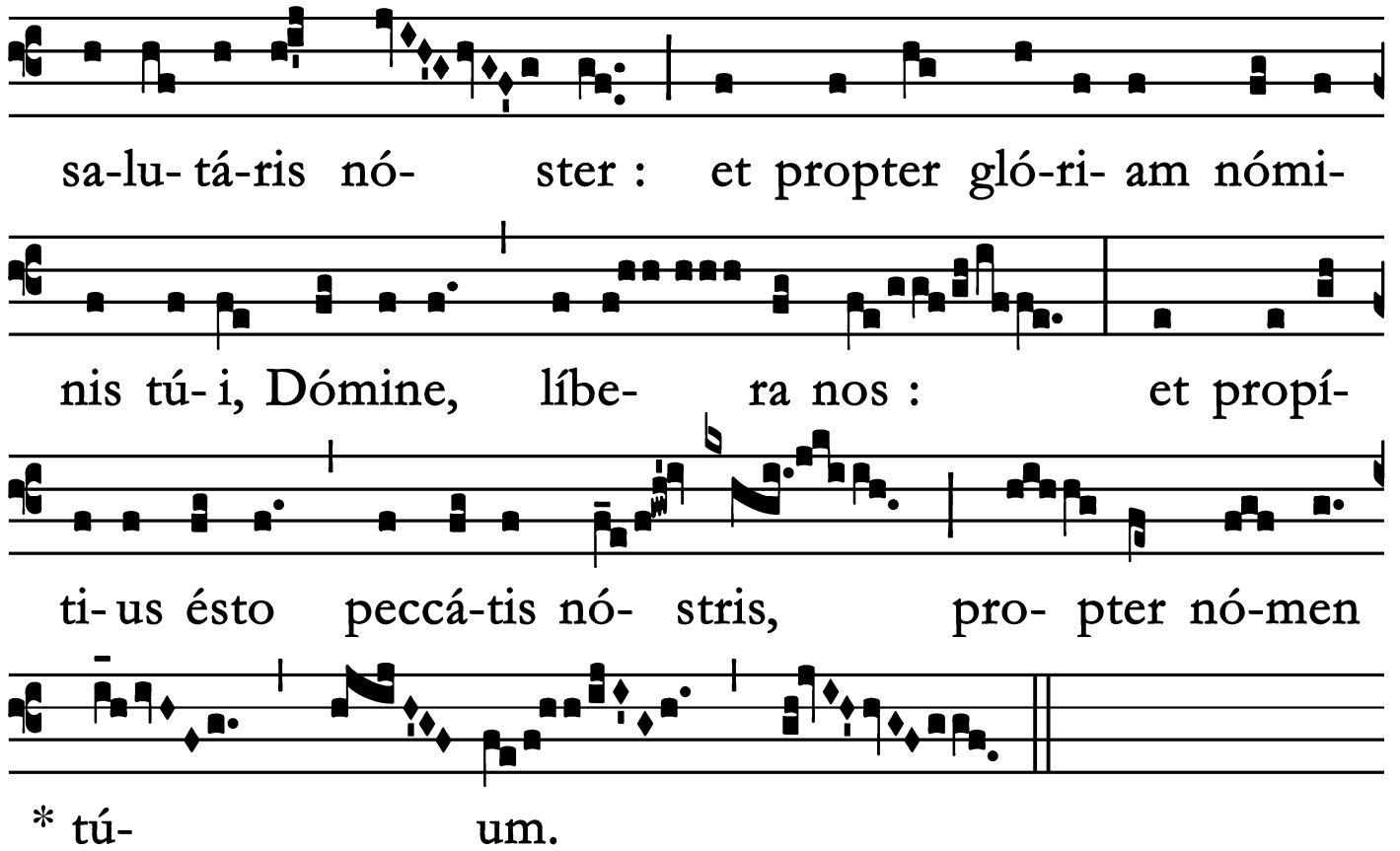


páu- pe-res fácti súmus nimis. ∇. Adjuva nos, Dé- us

Here all kneel.

Friday of Ember Week in Lent

Tract



sa-lu-tá-ris nó-ster : et propter gló-ri-am nó-mi-
nis tú-i, Dómine, líbe-ra nos : et propí-
ti-us ésto peccá-tis nó-stris, pro-pter nó-men
* tú-um.

Friday of Ember Week in Lent

Offertory

Offert.

5.

B

Ene-dic * á- nima mé-a Dó-mi-no, et nó-li

ob- li-vísci ómnes retri-bu- ti- ó-nes é- jus : et

renovábi- tur, sic- ut á- qui- læ, ju-vén-

tus tú- a.

Friday of Ember Week in Lent

Communion

Comm. 4.

E - ru-bé- scant, * et conturbén- tur ómnes in-i-
mí- ci mé- i : avertántur retrór- sum, et e-rubé-scant
valde ve-ló- ci- ter.