

Votive Mass of the Sacred Heart of Jesus

Introit

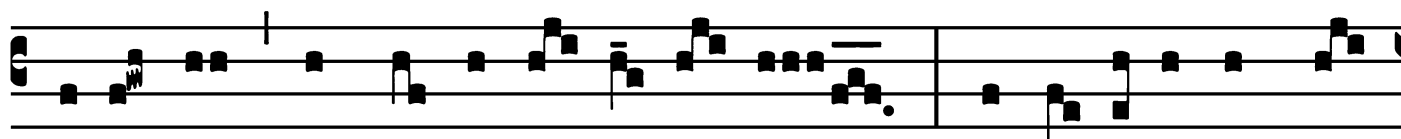
(In Paschal Time)

Intr.
5.

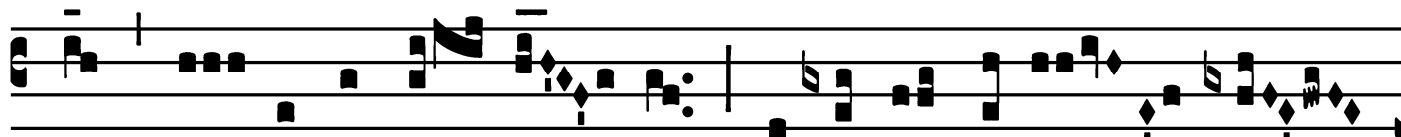
C



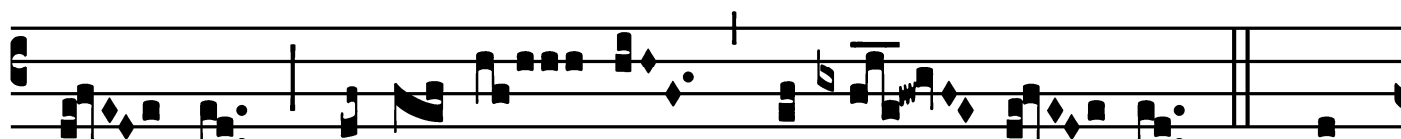
Ogi-ta- ti- ónes * Cór- dis é- jus in gene-ra-



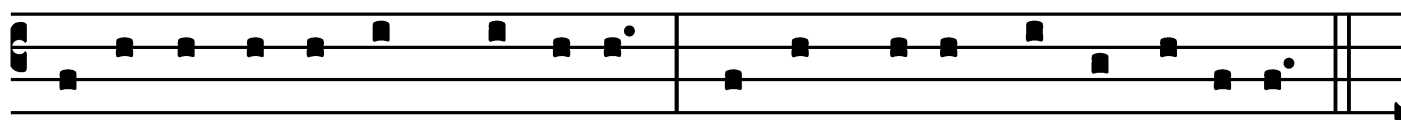
ti- ó-ne et ge-ne-ra- ti- ó-nem : ut é-ru-at a mór-



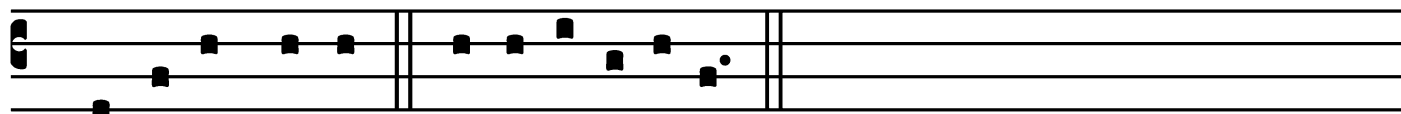
te á- nimas e- ó- rum et á-lat é-os in



fá- me, alle- lú- ia, al-le- lú- ia. *Ps.* Ex-



sultá-te jústi in Dómino, * réctos decet collaudá-ti- o.



Gló-ri- a Pátri. E u o u a e.

Votive Mass of the Sacred Heart of Jesus

Alleluia
(In Paschal Time)

3.
A Lle- lú-ia. * *ij.*

Ÿ. Tól- li-te jú- gum mé- um super
vos et dísci-te a me, qui- a mí-tis sum
et hú- mi- lis Cór-de, et inve-
ni- é- tis ré- qui- em
* a- nimá- bus véstris.

Votive Mass of the Sacred Heart of Jesus

Second Alleluia

(In Paschal Time)

8.
A L-le-lú-ia. *

Ÿ. Vení-te ad me,

ó-mnes qui laborá-

tis, et one-rá-ti é-stis : et égo

* re-fí-ci-am vos.

Votive Mass of the Sacred Heart of Jesus

Offertory

(In Paschal Time)

Offert. 6.
h Olocáu- stum * et pro peccá- to non postu-
lá- sti; tunc dí- xi : Ecce véni- o. In cá-
pi-te lí- bri scríptum est de me ut fáce-rem vo-lun-
tá- tem tú- am : Dé- us mé- us, vó- lu- i et lé-
gem tú- am in mé- di- o Córdis mé-
i. Alle- lú- ia.

Votive Mass of the Sacred Heart of Jesus

Communion

(In Paschal Time)

Comm. 6.

S I quis sí-tit * véni- at ad me et bí- bat, alle-
lú-ia, alle- lú- ia.