

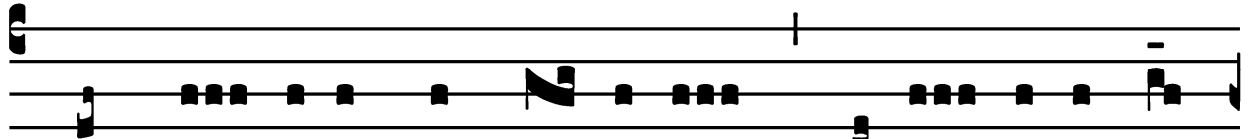
Common of Doctors

*Introit*

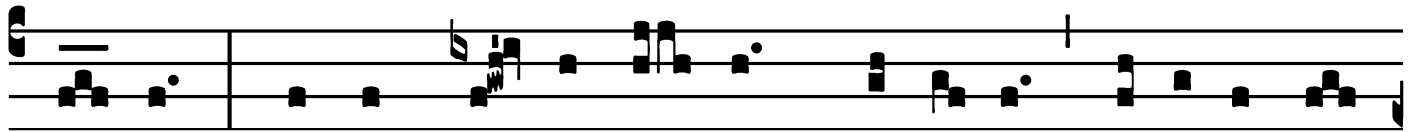
Intr.

6.

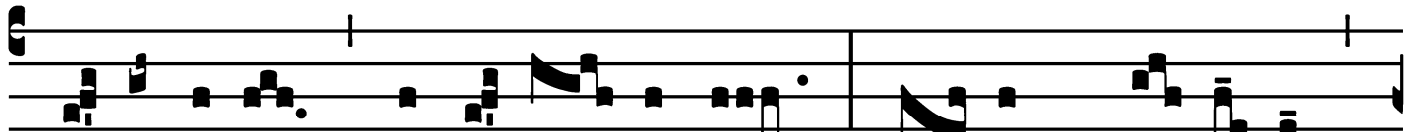
**I**



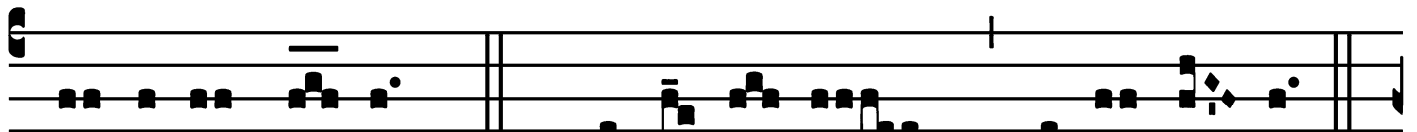
N mé- di- o \* Ecclé- si- æ apé- ru- it os



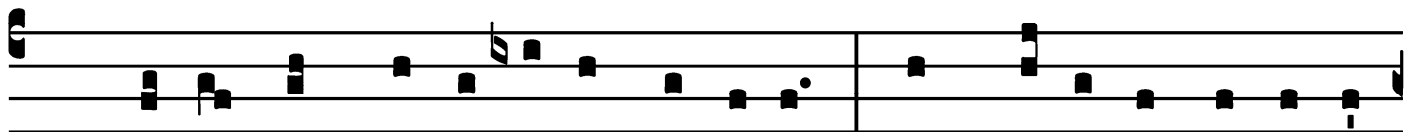
é- jus : et implé- vit é- um Dómi- nus spí- ri- tu sa-



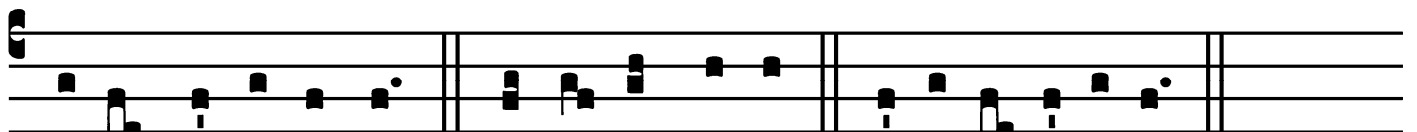
pi- énti- æ, et intel- léctus : stó- lam gló- ri- æ



índu- it é- um. *T. P.* Alle- lú- ia, alle- lú- ia.



*Ps.* Bónum est confi- té- ri Dómino : \* et psálle- re nómi- ni



tú- o, Altíssime. Gló- ri- a Pátri. E u o u a e.

Common of Doctors

*Gradual*

Grad.

1.

O

S jú- sti \* medi- tábi- tur sa-

pi- én- ti- am, et lín- gua é- jus

lo- qué- tur judí- ci- um.  $\forall$ . Lex Dé-

i é- jus in cór-

de ipsí- us : et non supplan-

tabún- tur \* grés- sus é- jus.

Common of Doctors

*Alleluia*

4.  
**A** Lle- lú-ia. \* *ij.*

∇. Amá- vit é- um Dó-mi-  
nus, et orná- vit é- um : stó-lam gló-  
ri- æ índu- it \* é-  
um.

Common of Doctors  
*Second Alleluia*  
(In Paschal Time)

1.  
**A** Lle- lú- ia. \*

Ÿ. Jú- stus ger- miná-  
bit sic-ut lí- li- um : et flo- ré-  
bit in æ- tér- num \* ante  
Dómi- num.

Common of Doctors

*Tract*

Tract.  
8.

**B**

E-á- tus vir, \* qui tímet Dó- mi-

num : in man-dá- tis é- jus

cú- pit ni- mis.  $\nabla$ . Pót- ens in térra

é-rit sémen é- jus : ge-ne- rá- ti-o re- ctó-

rum be- ne- di-cé-tur.

$\nabla$ . Gló- ri- a et di-ví-ti-æ in dómo é- jus : et

ju- stí- ti- a é- jus má- net \* in sá- cu- lum

sá- cu- li.

Common of Doctors

*Offertory*

Offert. 4.

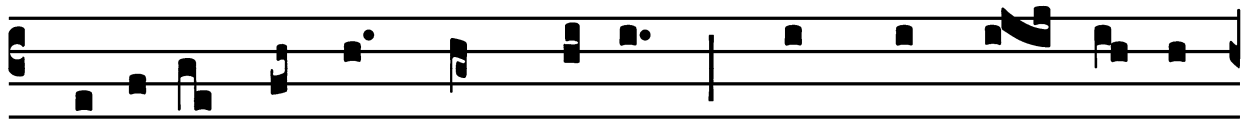
**I** U- stus \* ut pálma flo- ré-  
bit : sic-ut cé- drus, quæ in Lí- ba-  
no est, mul-ti-pli-cá- bi-tur.  
*T. P.* Al- le- lú- ia.

Common of Doctors  
*Communion*

Comm.

7.

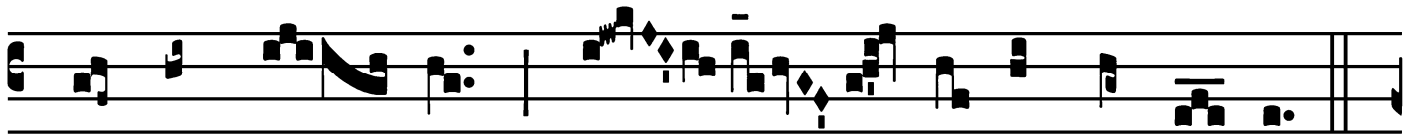
**F**



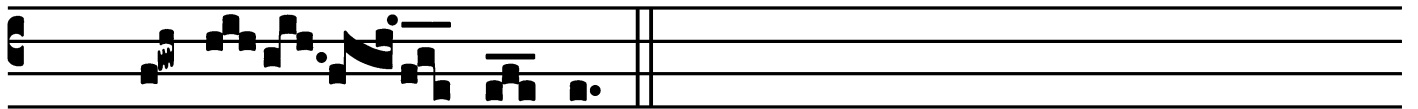
Idé-lis sérvus \* et prúdens, quem constí- tu- it



Dómi-nus super famí-li- am sú- am : ut det íl- lis



in témpo- re trí- ti- ci mensú- ram.



*T. P.* Alle- lú- ia.

