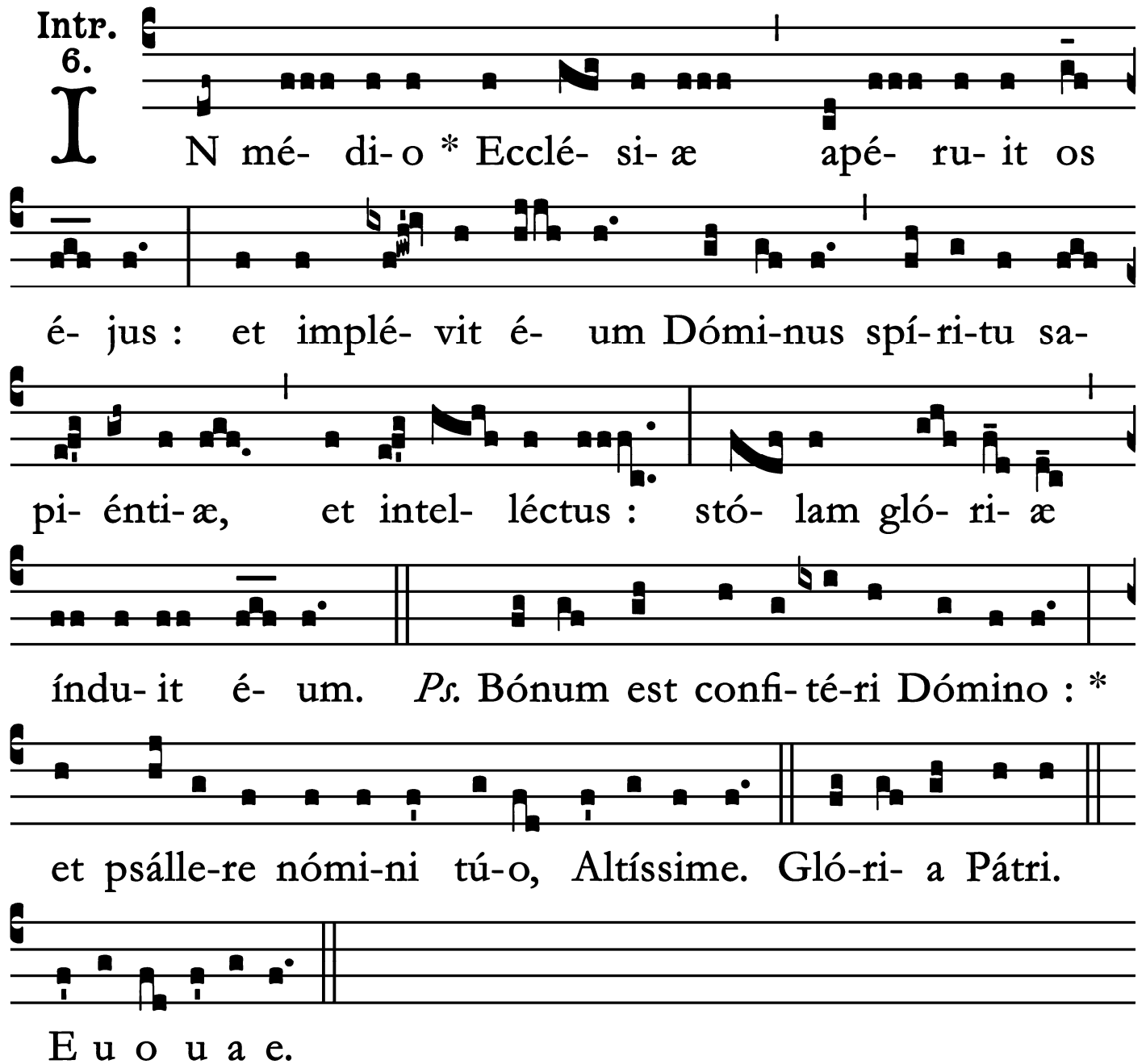


Introit

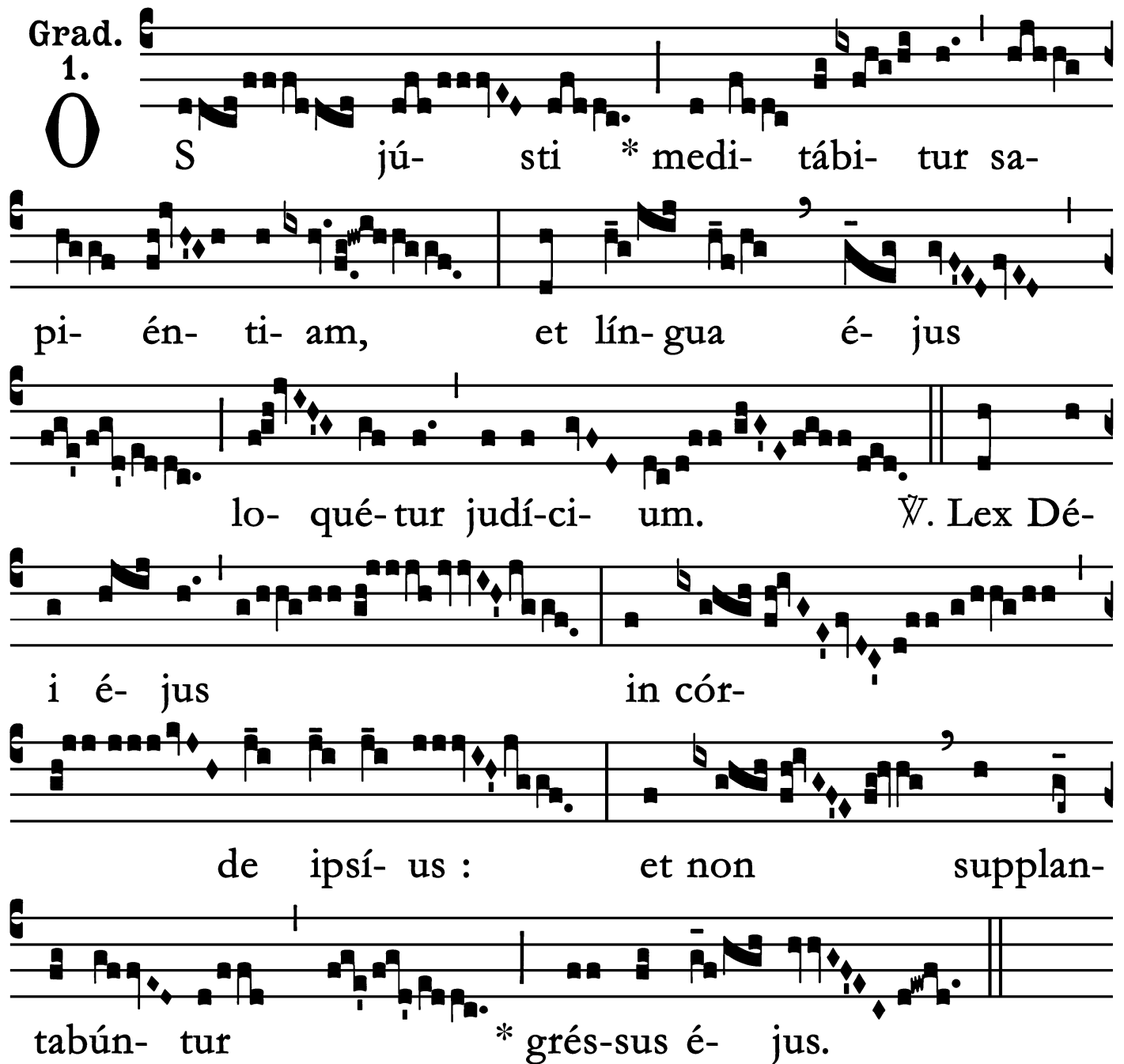
Intr. 6.



N mé- di- o * Ecclé- si- æ apé- ru- it os
é- jus : et implé- vit é- um Dómi- nus spí- ri- tu sa-
pi- énti- æ, et intel- léctus : stó- lam gló- ri- æ
índu- it é- um. *Ps.* Bónum est confi- té- ri Dómino : *
et psálle- re nómi- ni tú- o, Altíssime. Gló- ri- a Pátri.
E u o u a e.

Gradual

Grad. 1.



O S jú- sti * medi- tábi- tur sa-
pi- én- ti- am, et lín- gua é- jus
lo- qué- tur judí- ci- um. V. Lex Dé-
i é- jus in cór-
de ipsí- us : et non supplan-
tabún- tur * grés- sus é- jus.

Alleluia

4.
A Lle- lú-ia. * *ij.*

∩. Amá- vit é- um Dó-mi-
nus, et orná- vit é- um : stó-lam gló-
ri- æ índu- it * é-
um.

Tract

Tract.
8.

B

E-á- tus vir, * qui tímet Dó- mi-

num : in man-dá- tis é- jus

cú- pit ni- mis. \forall . Pót- ens in térra

é-rit sémen é- jus : ge-ne- rá- ti-o re- ctó-

rum be- ne- di-cé-tur.

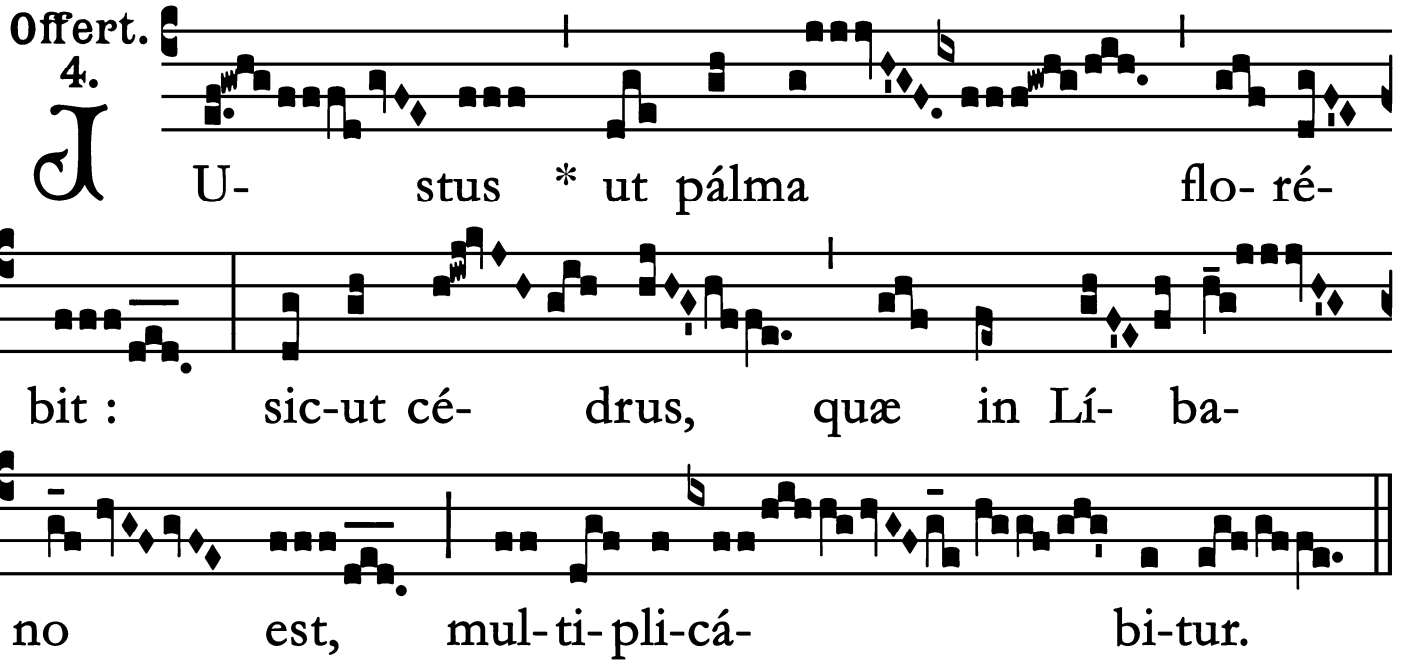
\forall . Gló- ri- a et di-ví-ti-æ in dómo é- jus : et

ju- stí- ti- a é- jus má- net * in sá- cu- lum

sá- cu- li.

Offertory

Offert. 4.



I U- stus * ut palma flo- ré-
bit : sic-ut cé- drus, quæ in Lí- ba-
no est, mul-ti-pli-cá- bi-tur.

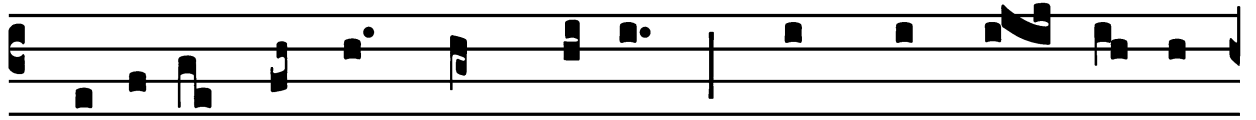
St. Francis de Sales, Bishop, Confessor and Doctor – January 29

Communion

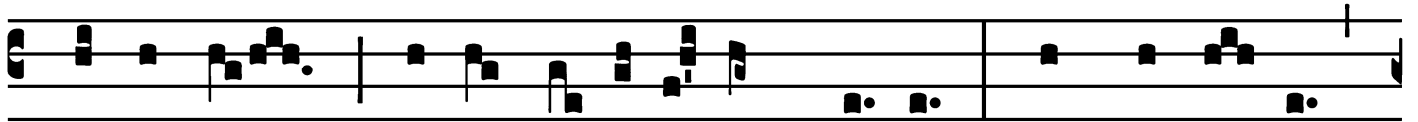
Comm.

7.

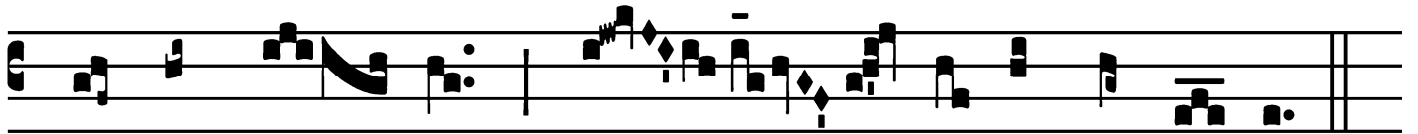
F



Idé-lis sérvus * et prúdens, quem constí- tu- it



Dómi-nus super famí-li- am sú- am : ut det íl- lis



in témpo- re trí- ti- ci mensú- ram.

