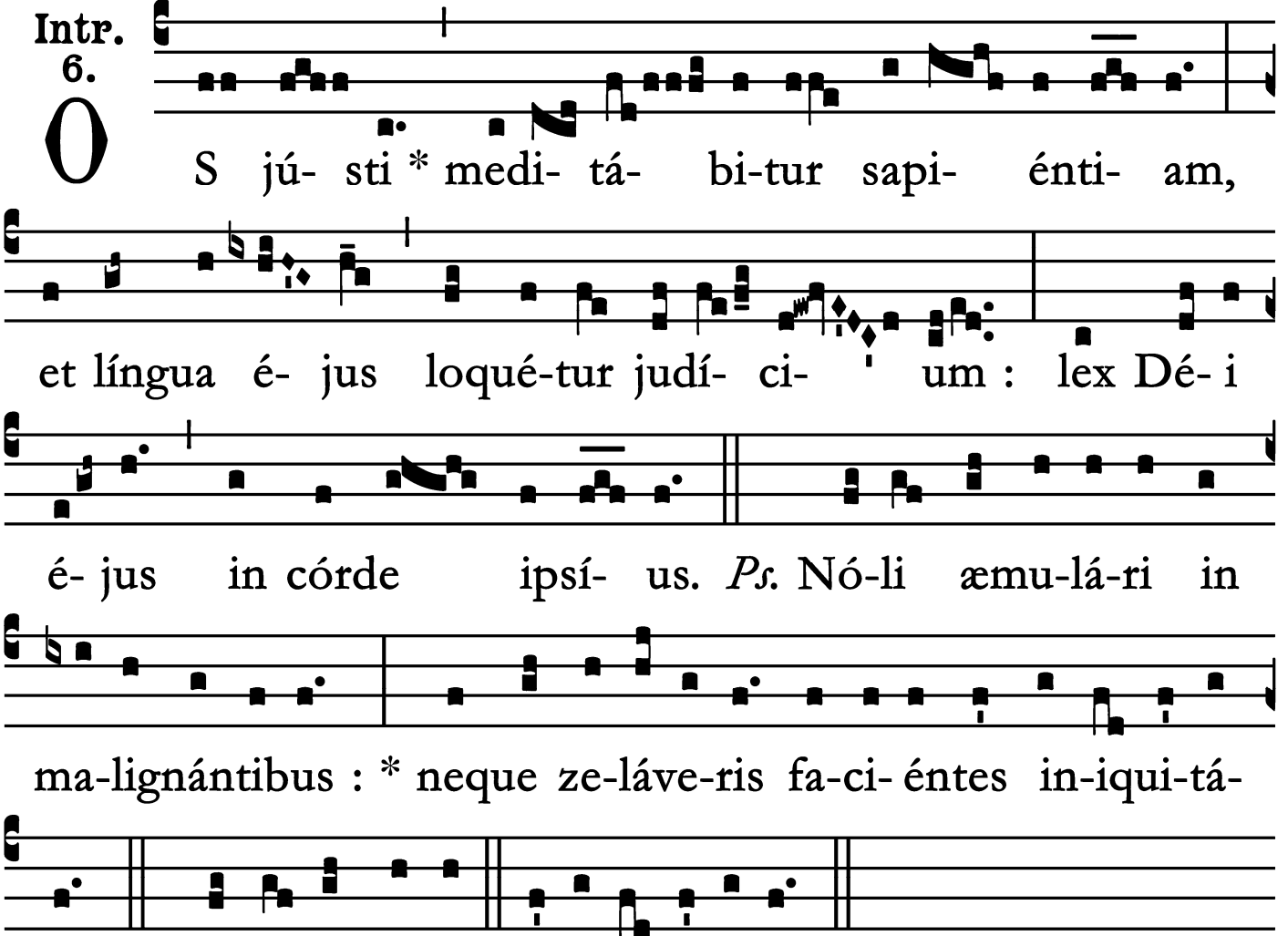


Introit

Intr. 6.



O S jú- sti * medi- tá- bi-tur sapi- énti- am,
et língua é- jus loqué-tur judí- ci- um : lex Dé- i
é- jus in córde ipsí- us. *Ps.* Nó-li æmu-lá-ri in
ma-lignántibus : * neque ze-láve-ris fa-ci-éntes in-iqui-tá-
tem. Gló-ri- a Pátri. E u o u a e.

Gradual

Grad.

2.

J

Us-tus * ut pálma flo-ré- bit : sic-ut cé-

drus Líba- ni mul-tipli-cá-

bi-tur in dó- mo Dómi-ni.

∩. Ad annunti-ándum ma-

ne mi- se-ri-córdi- am tú-

am, et ve-ri-tá-tem tú-

am * per nó-ctem.

St. Louis, King of France, Confessor - August 25

Alleluia

1.
A Lle- lú-ia. * *ij.*

Ÿ. Be- á- tus vir, qui súf- fert

ten- ta- ti- ó- nem : quó- ni- am cum probá- tus fú-

e- rit, accí- pi- et co- ró- nam * ví- tæ.

St. Louis, King of France, Confessor - August 25

Offertory

Offert.
2.

V E- ri- tas mé- a * et mi-se-ri-cór- di-
a mé- a cum í- pso : et in nómi- ne mé-
o exaltábi- tur córnu é- jus.

St. Louis, King of France, Confessor - August 25

Communion

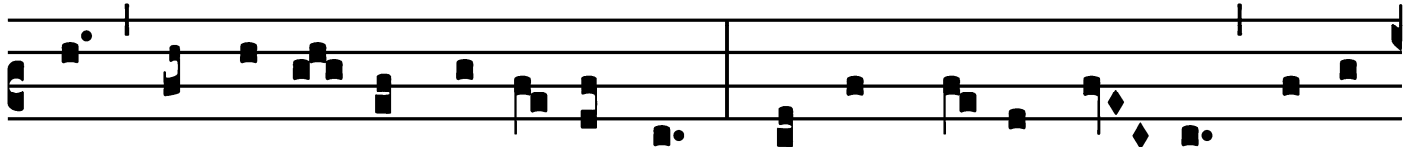
Comm.

3.

B



E- á-tus sér- vus, * quem, cum vé- ne-rit Dómi-



nus, invéne- rit vi-gi- lán-tem : amen dí-co vó- bis, super



ómni- a bóna sú- a constí- tu- et é- um.