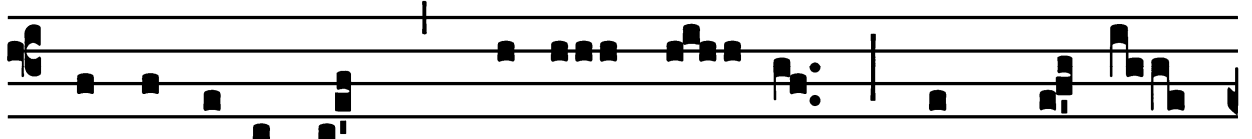


Dedication of the Archbasilica of Our Savior - November 9

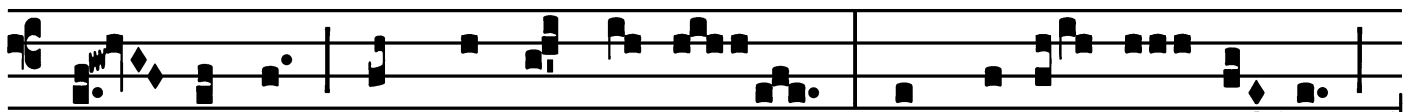
*Introit*

Intr.  
2.

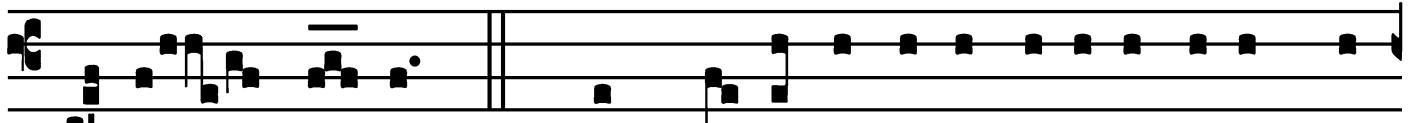
**T**



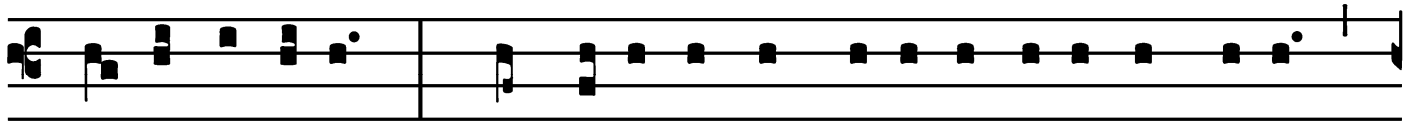
Errí-bi-lis est \* lócus í- ste : hic dómus



Dé- i est, et pórtā cœ- li : et vocá- bi- tur



áu-la Dé- i. *Ps.* Quam di- lécta tabernácula tú-a, Dó-



mi-ne virtútum! \* concupíscit, et dé-fi- cit ánima mé- a



in átri- a Dómi- ni. Gló- ri- a Pátri. E u o u a e.

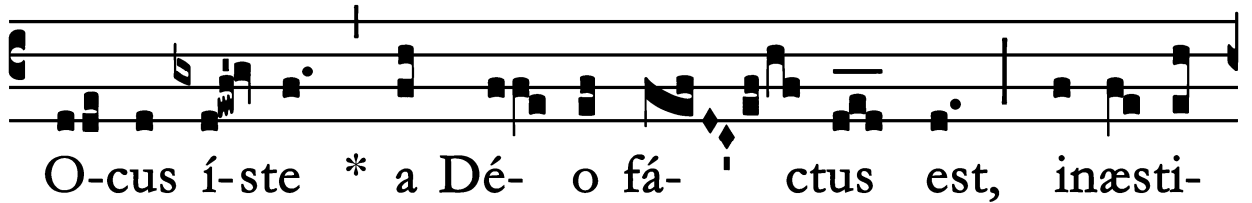
Dedication of the Archbasilica of Our Savior - November 9

*Gradual*

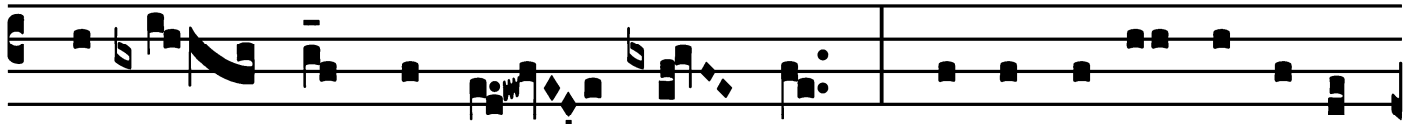
Grad.

5.

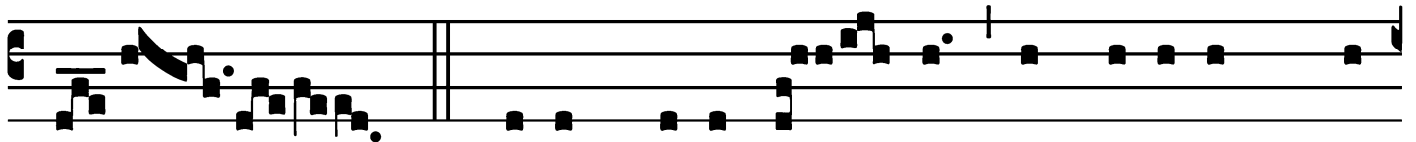
**L**



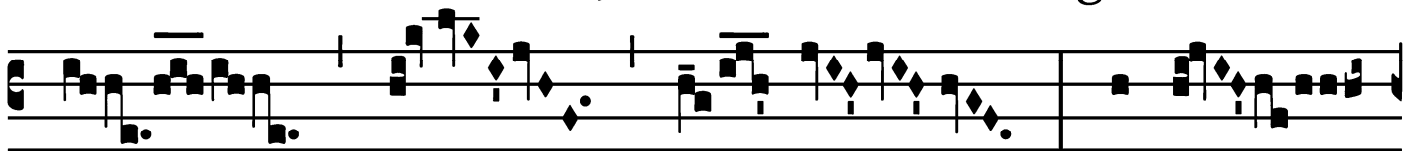
O-cus í-ste \* a Dé- o fá- ctus est, inæsti-



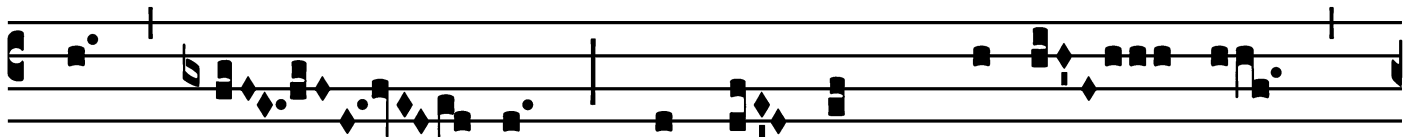
má-bi- le sacra- mén- tum, irreprehen-sí-bi-lis



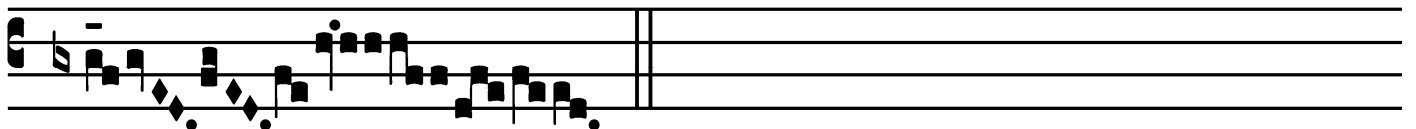
est. *V.* Dé-us, cú-i ád- stat Angelórum chó-



rus, exáu-



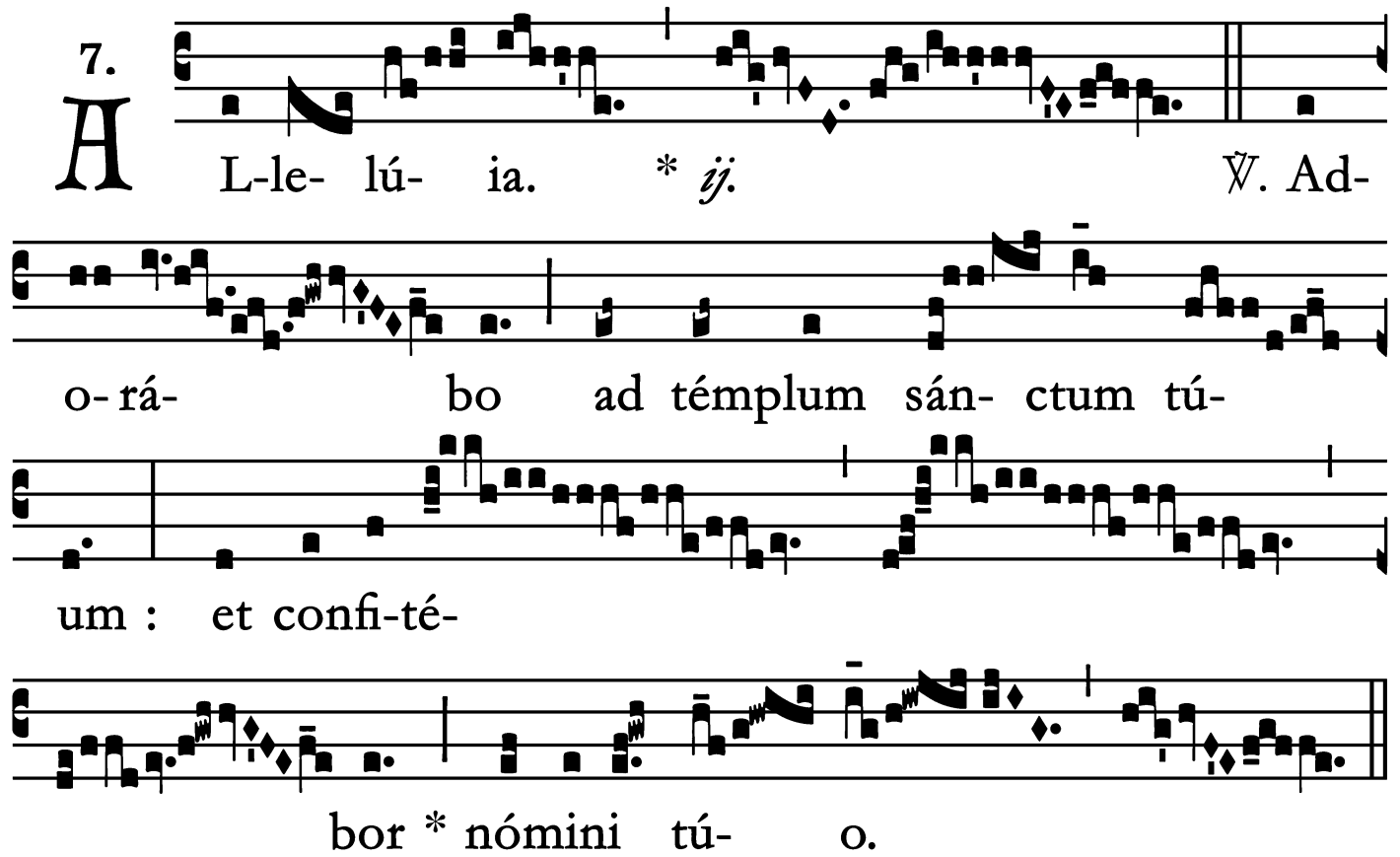
di pré- ces servó- rum \* tu- ó- rum.



Dedication of the Archbasilica of Our Savior - November 9

*Alleluia*

7.  
**A** L-le- lú- ia. \* *ij.* ∇. Ad-  
o- rá- bo ad témplum sán- ctum tú-  
um : et confi-té-  
bor \* nómini tú- o.

The image shows a musical score for the Alleluia. It consists of four staves. The first staff is the vocal line, starting with a large 'A' and the number '7.'. The lyrics are: 'L-le- lú- ia. \* ij. ∇. Ad-'. The second staff is the piano accompaniment, with lyrics: 'o- rá- bo ad témplum sán- ctum tú-'. The third staff continues the piano accompaniment with lyrics: 'um : et confi-té-'. The fourth staff concludes the piano accompaniment with lyrics: 'bor \* nómini tú- o.'. The music is written in a style that uses square notes and stems, typical of early printed music.

## Offertory

Offert.

6.

**D**

Omne Dé- us, \* in simpli- ci-tá- te córdis

mé- i læ- tus ób- tu- li u- nivér- sa : et pó-

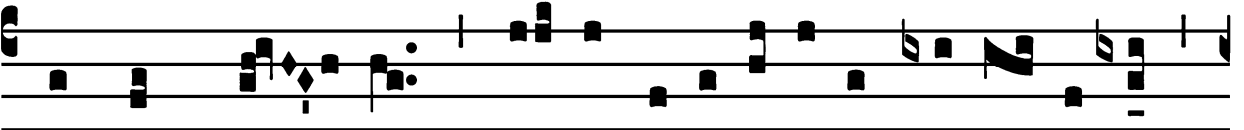
pulum tú- um, qui repér- tus est, ví- di cum ingéni

gáu- di- o : Dé- us Is- ra- òl, custó- di hanc vo-

lun- tá- tem, Dómine Dé- us, al- le-

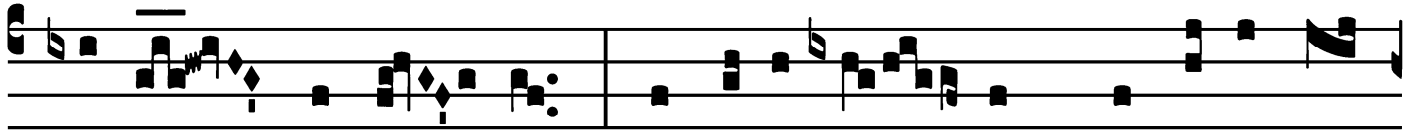
lú- ia.

## *Communion*

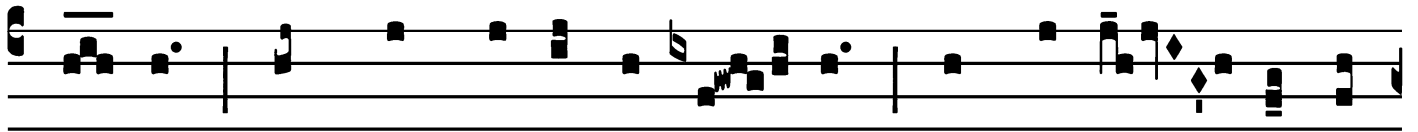
Comm. 5. 

**D**

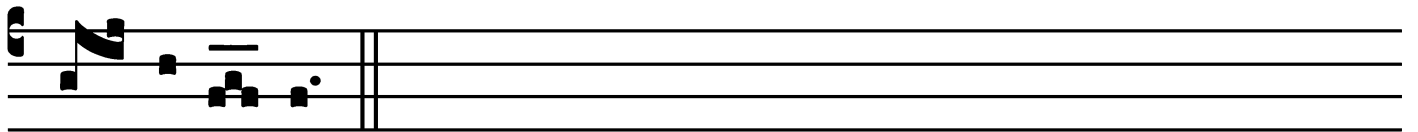
Omus mé- a, \* dómus ora-ti-ónis vocá- bi-tur,



dí-cit Dómi- nus : in é- a ó- mnis, qui pé-tit, ác-



ci- pit : et qui quæ-rit, ínve- nit, et pulsán- ti a-



pe- ri-é- tur.