

Mass of the Blessed Virgin Mary on Saturday

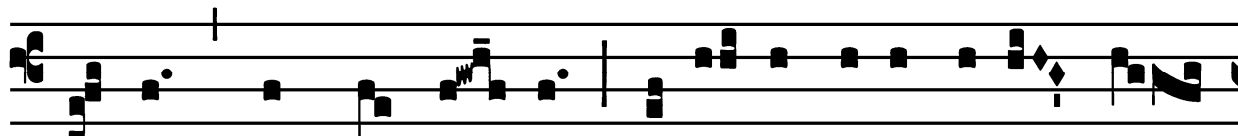
Introit

(In Paschal Time)

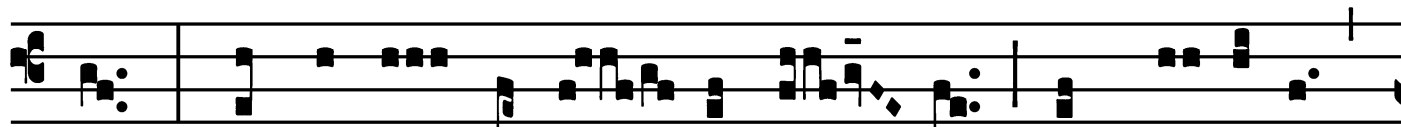
Intr.

2.

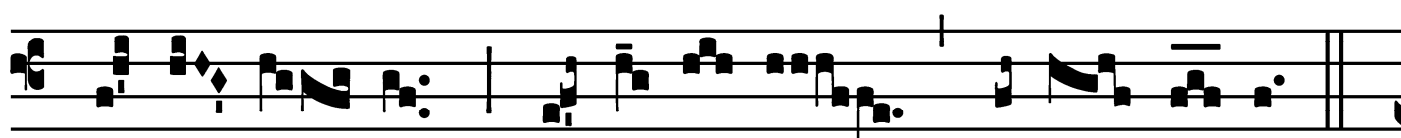
S



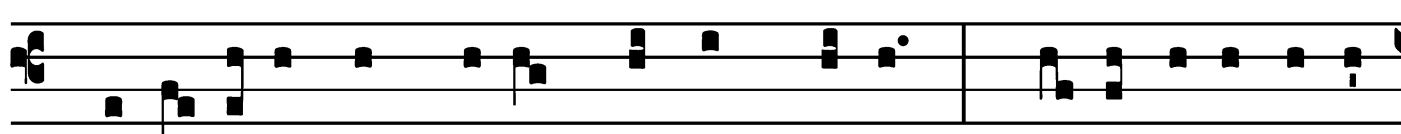
Alve * sáncta Pá- rens, ení- xa pu-érpera Ré-



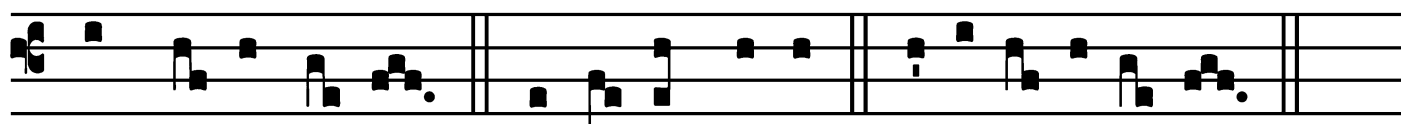
gem, qui cóe-lum terrám-que ré- git in sáe-cu-la



sæ-cu- ló- rum, al-le-lú- ia, alle- lú- ia.



Ps. Eructávit cor mé-um vérbum bónum : * dí-co égo ópe-

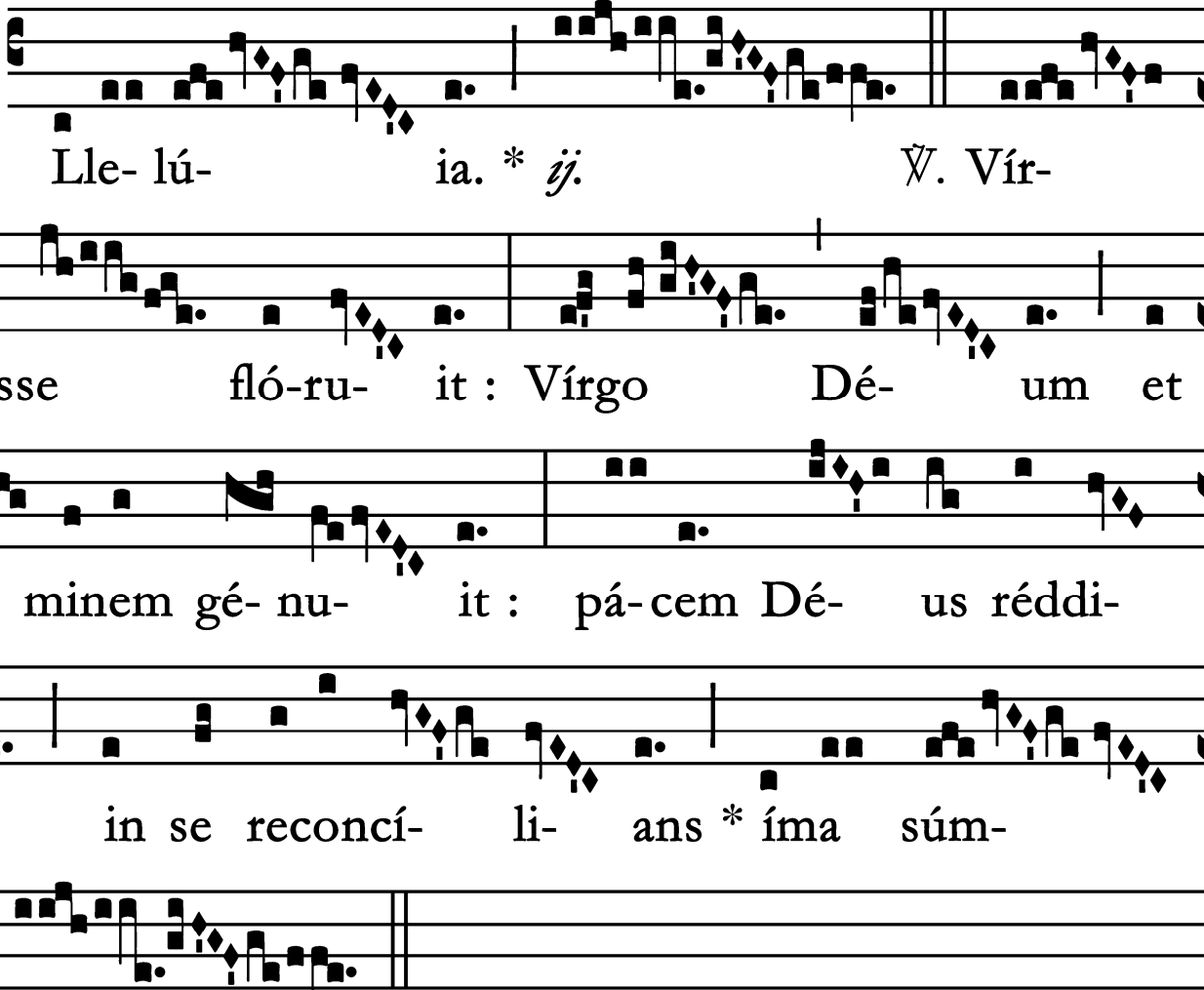


ra mé- a ré-gi. Gló-ri- a Pátri. E u o u a e.

Mass of the Blessed Virgin Mary on Saturday

Alleluia
(In Paschal Time)

8.
A



Lle- lú- ia. * *ij.* V̇. Vír-
ga Jéssé fló-ru- it : Vírgo Dé- um et
hó- minem gé- nu- it : pá- cem Dé- us réddi-
dit, in se reconcí- li- ans * íma súm-
mis.

Mass of the Blessed Virgin Mary on Saturday

Second Alleluia

(In Paschal Time)

2.
A Lle- lú-ia. *

∇. Ave Ma- rí- a, grá- ti- a plé- na :

Dó- mi- nus té- cum : bene-

dí- cta tu * in mu- li-

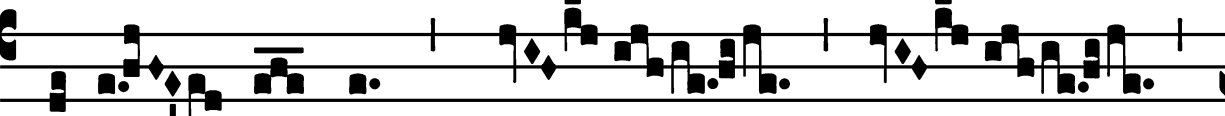
é- ribus.

Mass of the Blessed Virgin Mary on Saturday

Offertory

(In Paschal Time)

Offert.
8.

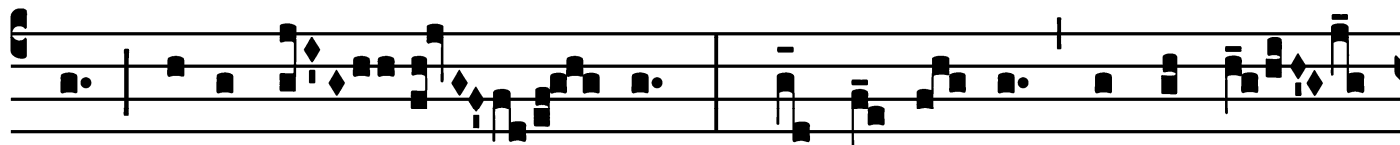


B

E-á- ta es, * Vír-



go Ma- rí- a, quæ ómni-um portá-

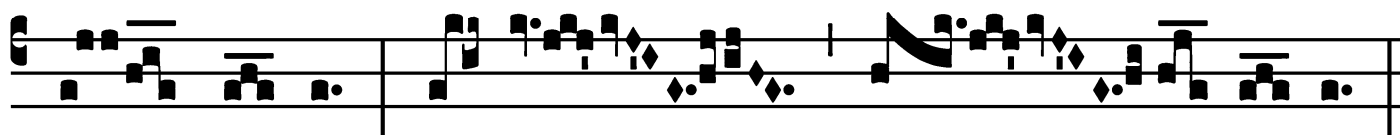


sti Cre-a-tó-

rem : ge-nu- í- sti qui te fé-



cit, et in æ- tér-num pérma-nes



Vír-go, al-le-

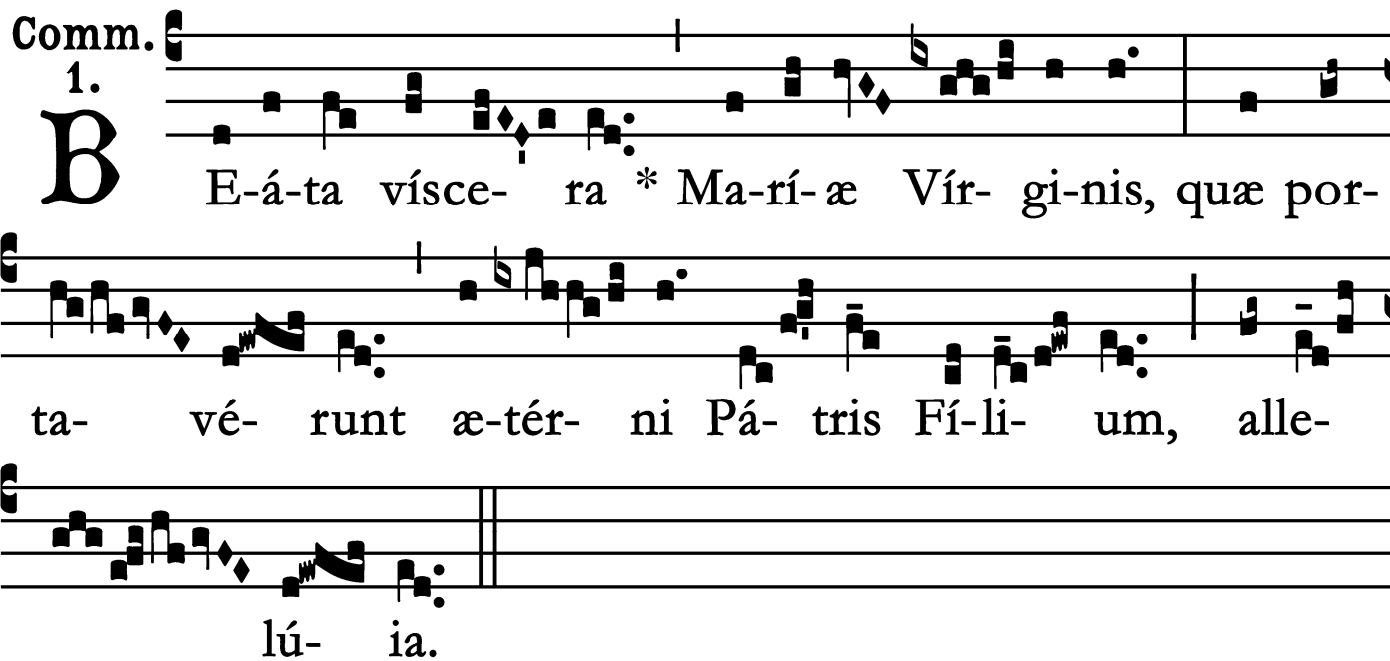
lú- ia.

Mass of the Blessed Virgin Mary on Saturday

Communion

(In Paschal Time)

Comm. 1.



B E-á-ta vísce- ra * Ma-rí-æ Vír- gi-nis, quæ por-
ta- vé- runt æ-tér- ni Pá- tris Fí-li- um, alle-
lú- ia.