

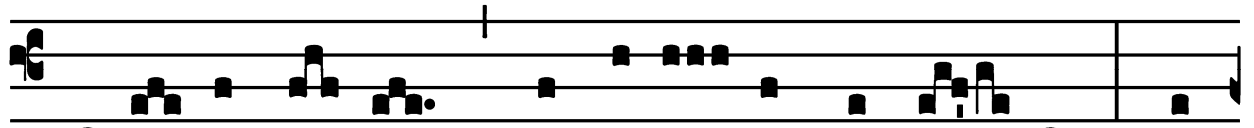
Votive Mass of the Blessed Sacrament (Outside Paschal Time)

*Introit*

Intr.

2.

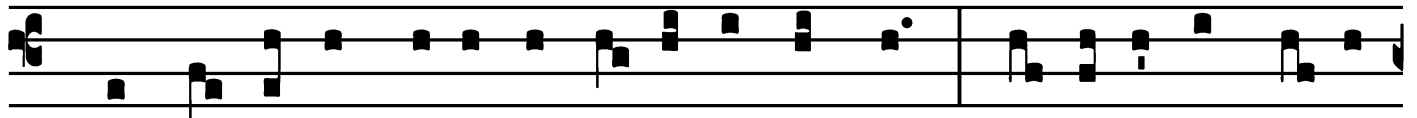
**C**



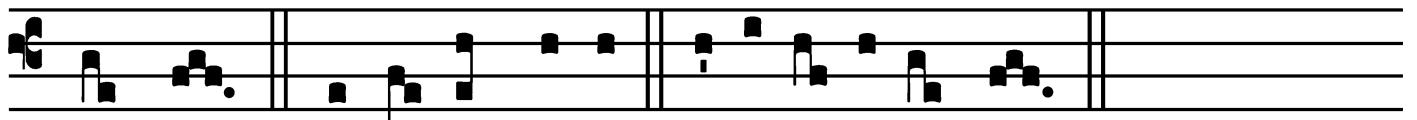
Ibá- vit é- os \* ex ádi- pe frumén- ti : et



de pé- tra, melle sa- tu- rá- vit é- os.



*Ps.* Exsul- tá- te Dé- o adju- tó- ri nóstro : \* ju- bi- lá- te Dé- o



Já- cob. Gló- ri- a Pátri. E u o u a e.

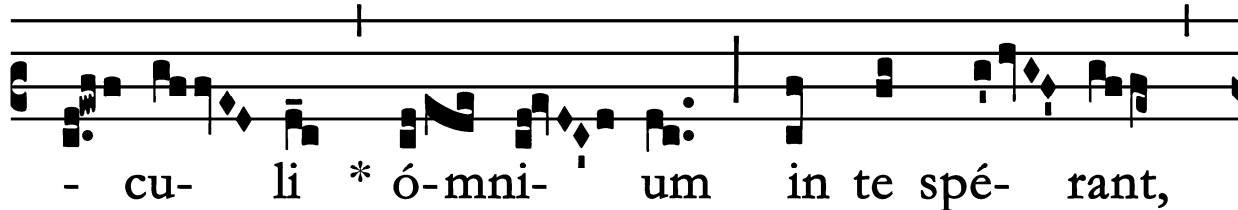
Votive Mass of the Blessed Sacrament (Outside Paschal Time)

*Gradual*

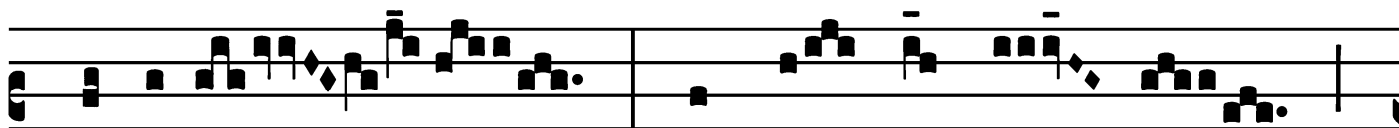
Grad.

7.

O

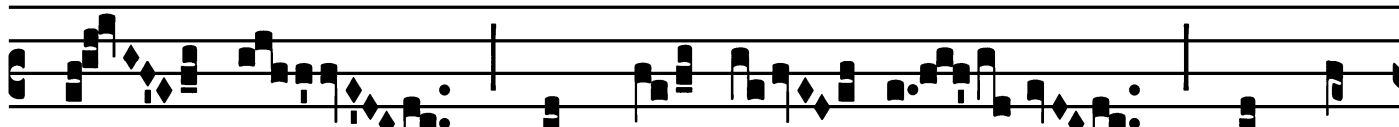


- cu- li \* ó-mni- um in te spé- rant,



Dómine :

et tu das íl- lis

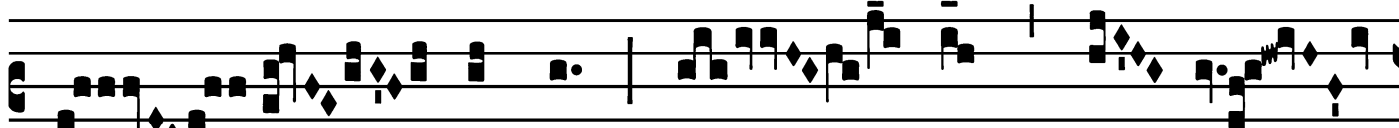


é- scam in témpo- re oppor-

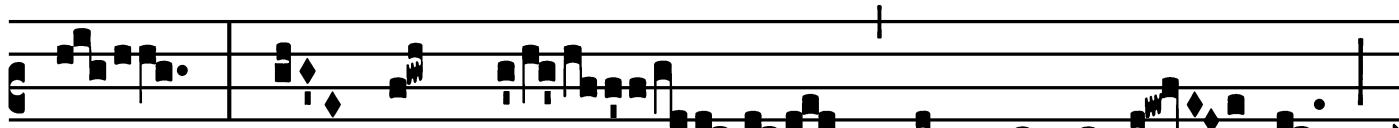


tú- no.

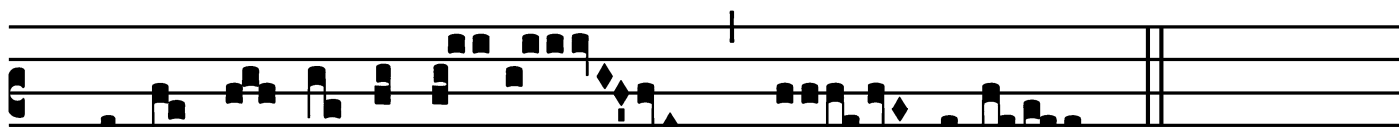
∩. Ape-



ris tu má- num tú- am :



et ímples ómne áni- mal



\* bene- di- cti- óne.

Votive Mass of the Blessed Sacrament (Outside Paschal Time)

*Alleluia*

7.  
**A** Lle- lú- ia. \* *ij.*

∇. Cá-ro mé- a ve-re est cí- bus, et

sán- guis mé- us ve-re est pó- tus : qui

mandú- cat mé- am cárnem, et bí- bit

mé- um sán- gui-nem, in me má- net,

et é-go \* in é- o.

Votive Mass of the Blessed Sacrament (Outside Paschal Time)

*Tract*

(After Septuagesima – Page 1 of 2)

Tract.  
8.  
**A**

B órtu só-lis \* usque ad oc- cá-  
sum, mágnum est nómen mé- um  
in gén- tibus.  
∷. Et in ómni lóco sacri-fi-cá- tur, et of-fértur  
nómi-ni mé-o oblá-ti-o mún-da :  
qui- a mágnum est nómen mé- um in gén-  
tibus. ∷. Vení- te, comédi-

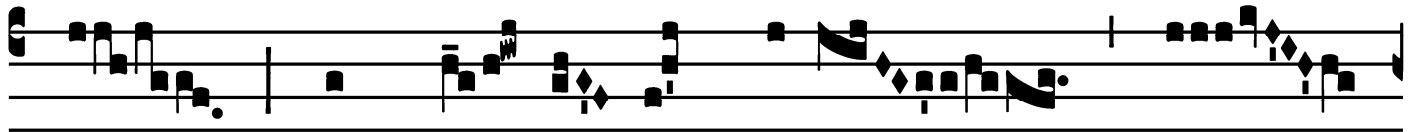
Votive Mass of the Blessed Sacrament (Outside Paschal Time)

*Tract*

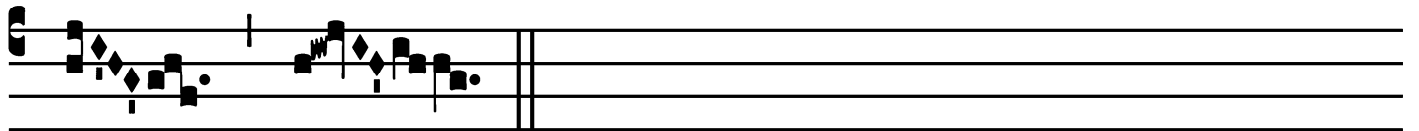
(Page 2 of 2)



te pánem mé- um : et bí-bi-te ví- num,



quod mí- scu- i \* vóbis.



Votive Mass of the Blessed Sacrament (Outside Paschal Time)

*Offertory*

Offert.

4.

**S**

Acerdó-tes \* Dó- mi-ni incén-sum et

pá- nes óffe- runt Dé-o : et íde-o sáncti

é- runt Dé-o sú- o, et non pól- lu-

ent nó- men é- jus.

Votive Mass of the Blessed Sacrament (Outside Paschal Time)

*Communion*

Comm.

7.

**Q**

Uo-ti-escúmque \* mandu-cá- bi-tis pánem hunc,

et cá-li-cem bi-bé-tis, mórtem Dó-mi-ni annunti-ábi-

tis, do-nec vé-ni-at: í-taque qui-cúmque mandu-

cá-ve-rit pánem, vel bí-be-rit cá-li-cem Dómi-ni indí-

gne, ré-us é-rit córpo-ris et sán-gui-nis Dó-mi-ni.

