

## Introit

Intr.  
3.

V

Eni \* de Líba- no, spón- sa mé- a,

véni de Líba- no, vé- ni : vulne-rásti cor mé- um,

sóror mé- a spónsa, vulne-rá-sti cor mé- um.

*Ps.* Laudáte, pú-e-ri, Dómi-num, \* laudáte nó-men Dómi-

ni. Gló-ri-a Pátri. E u o u a e.

## Gradual

Grad.

5.

**C**

Onfí- te-or tí-bi, \* Pá- ter, Dó- mine có-li et

tér- ræ, qui- a abscondísti hæc a sapi-én-

ti- bus et prudén- ti-bus, et reve- lásti é- a

párvu- lis.  $\Psi$ . Dó-mine

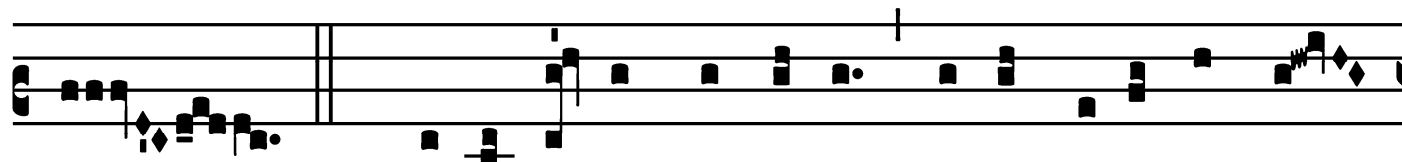
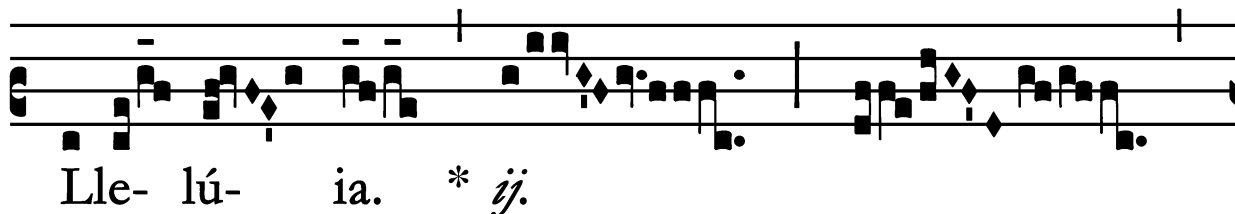
spes mé- a a juventú-

te \* mé- a.

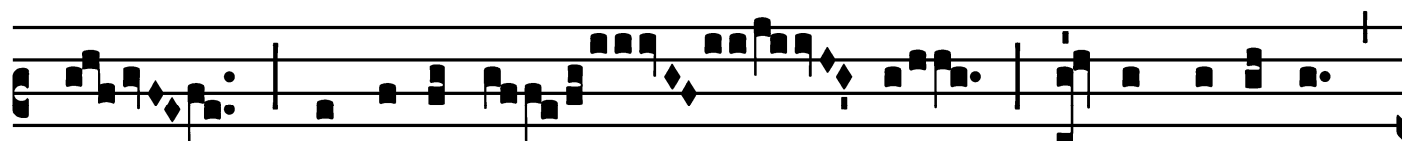
# Alleluia

(Page 1 of 2)

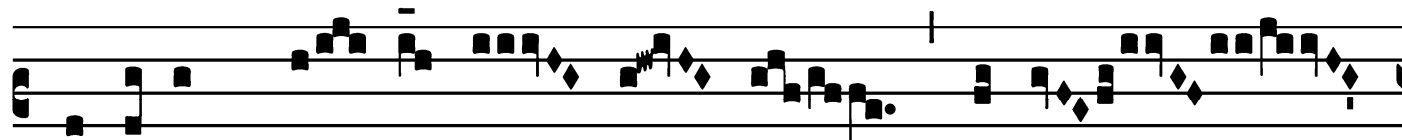
7.  
**A**



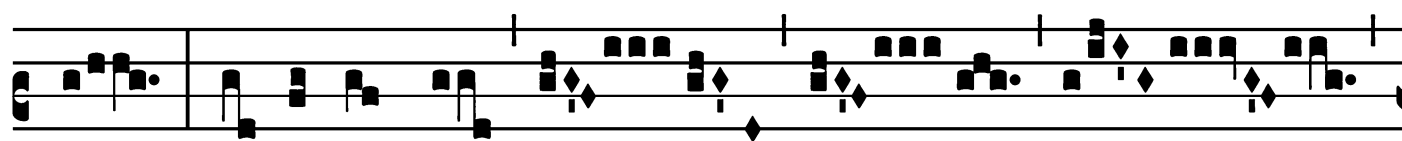
∇. Qua-si ró-sa plantá-ta super rívos aquá-



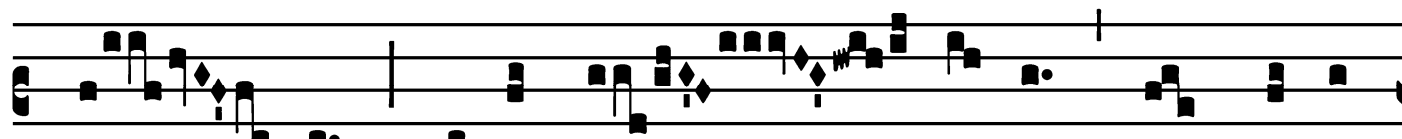
rum fructi-fi-cá- te : qua-si Líbanus



odórem su- a- vi- tá- tis habé-



te : flo-ré-te, fló-



res, qua-si lí- li- um, et dá-te



odó- rem, et frondé- te in grá- ti-

Feast of St. Teresa of the Child Jesus, Virgin – October 3

# *Alleluia*

(Page 2 of 2)


am, et collaudá-te cán-ti-cum, et benedí-ci-te Dó-

mi-num \* in opé-ri-bus

sú-is.

## Offertory

Offert. 1.



**M** Agní- ficat \* á- nima mé- a Dó- mi-num :

et exsul- tá- vit spí- ri- tus mé- us in Dé- o sa- lu- tá-

ri mé- o : qui- a re-

spé- xit humi- li- tá- tem ancíl- læ sú- æ, fé- cit

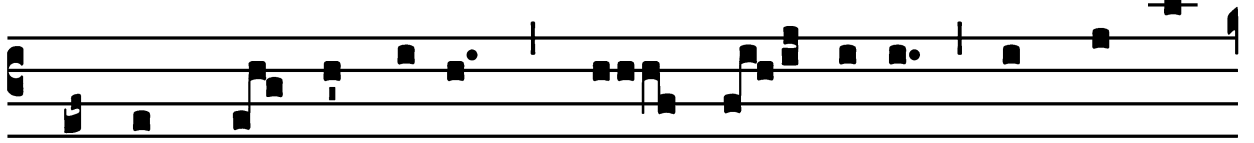
mí- hi má- gna qui pót- ens est.

## Communion

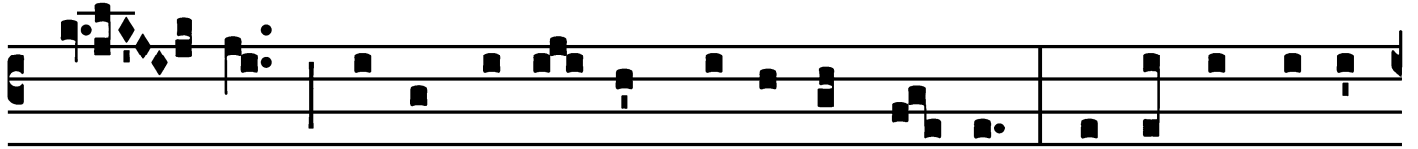
Comm.

7.

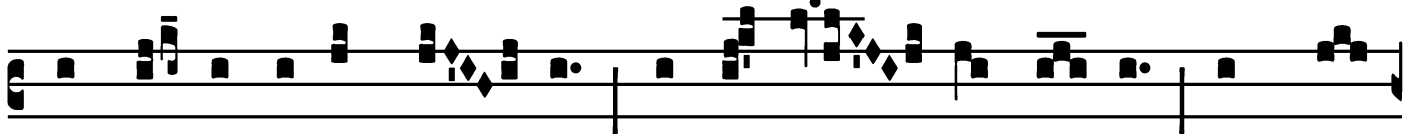
**C**



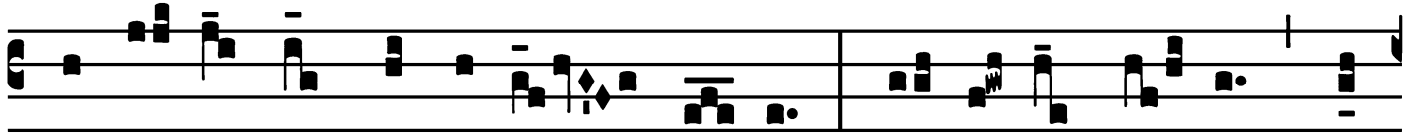
Ircumdú- xit é- am, \* et dó- cu- it et custo-



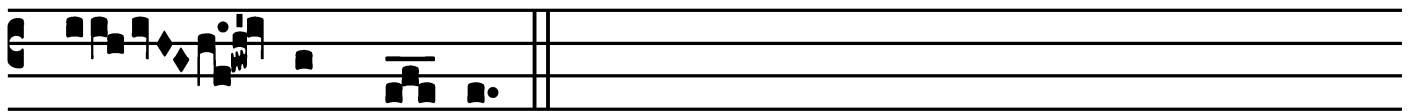
dí- vit qua- si pupíl- lam ócu- li sú- i. Sic- ut áqui- la



expándit á- las sú- as, et assúmp- sit é- am, atque



portá- vit in húme- ris sú- is. Dó- mi- nus só- lus dux



é- jus fú- it.